



**CITYCOLLECTION**

— AUSTRALIA —

DRESSING FOR WORK MADE EASY



# DRESSING FOR WORK

*made easy!*



The premise behind 'Dressing For Work Made Easy' is simple. Businesses require quality uniforms that are practical and reflect a strong brand identity. Staff perform better when they are comfortable and feel confident in their attire. Our entire uniform range is designed with you and your expectations in mind.

## Contents

4-5	FIT FOR PURPOSE FIT FOR STYLE
6-7	EXCLUSIVELY INCLUSIVE
8-9	BRAND IT WITH COLOUR
10-13	SMART CASUAL
14-15	RECYCLED COLLECTION
16-35	CO-ORDINATES
36-59	TOPS & SHIRTS WOMEN
60-67	TOPS & SHIRTS MEN
68-75	SUITING SEPARATES
76-111	HEALTHCARE
112-125	PRODUCT DETAIL
126	GARMENT SIZE GUIDE
127	INDEX

**Mens shirts left to right:**

**4773** Oliver, **4207** Gingham City Check,  
**4774** Denim, **4265** Pinfeather, **MSH80** Cotton Comfort,  
**4222** Pippa Check, **MSH80** Cotton Comfort

# Fit for purpose. Fit for *style.*

## Modern corporate

Our range is designed for the modern professional requiring contemporary looks that are adaptable in any work environment. All roles have been thoughtfully considered in the design phase of each style.

Designs are:

- Trans-seasonal
- Co-ordinating
- Current and on trend

## Designed for every body

All designs consider the concept of *individuality*. That's why across our men's and women's range there are a variety of *shapes, styles* and *fabric blends* to suit most body types – because every body is different.

Garments are:

- Flattering to most shapes and sizes
- Tailored for a range of movements
- Designed to appeal to all staff

## Colour options

Create a look that is best suited to your brand. Our versatile and strong colour stories offer a broad range of styles, giving you flexible options to create or enhance your brand. By co-ordinating designs within your preferred colour selection you'll project a really *strong, unified* and *successful* team image.

Garments promote:

- Stylish colour stories
- Individuality
- A strong team appearance

## Quality fabric & high standards

Our garments reflect the ultimate standards in quality and design. The fabrics have been carefully researched and developed to be functional, practical, versatile and recycled, without compromising comfort. We seek the latest in fabric technology offering our clients the very best options available.

Quality means:

- Attention to detail
- Innovative and tested fabrics
- Superior manufacturing

## Easy care & easy wear

We have selected high quality fabrics with easy care finishes to meet the daily demands of your corporate wardrobe. Our range includes *stretch* for extra movement, *breathable* options to keep you cool and dry, and *wrinkle-free* styles to keep you looking your best throughout the day.

Designs are:

- Quick drying
- Soft and comfortable
- Durable

## Stock service & delivery

All styles are available on stock service. This ensures your team will be fitted with the best quality uniform, *quickly* and *efficiently*.

Orders are:

- Processed quickly
- Managed by our Customer Service team
- Always our priority
- Accessible via our online portal





2147 Ezylin® Meghan  
FJK35-992 Dianna Jacket  
FJ365 R Jeans

# Uniforms that are exclusively *inclusive*

Be it size, shape or complexion,  
we understand that "one fit"  
doesn't suit all - that's why  
our styles flatter every body!

**Left to right:**  
2147 Ezylin® Meghan  
FJ365 RJeans

CA22T Pharmacy/Dental Top  
CA3P So Ezy Pant

2284 Zip Back Tunic  
FJ365 RJeans







# Brand it with *colour*

**This page**  
2284 Zip Back Tunic

**Opposite page  
clockwise from left**  
2263 So Ezy  
2299 Knit Woven  
2221 Pippa Knit  
2287 Grace  
2281 Heart Print Tunic



By co-ordinating designs with your colour selection, you'll project a strong, unified and successful team image, whilst maintaining a sense of individuality.





## DENIM SHIRT

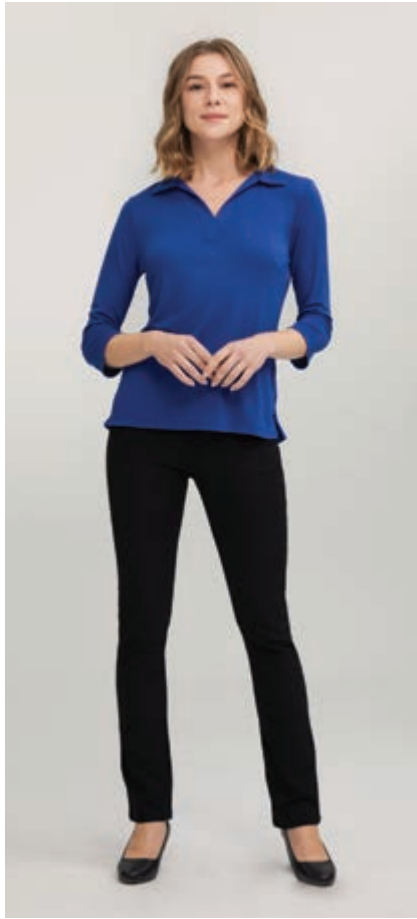
**Womens 2774** Long sleeve  
65% Lyocell, 35% Cotton  
(Soft Denim)  
Sizes: 6 - 26, Semi-Fitted  
Colour: Denim  
with **FJ365** R Jeans

**Mens 4774** Long sleeve  
65% Lyocell, 35% Cotton  
(Soft Denim)  
Sizes: S - 5XL, Sports Fit  
Colour: Denim  
with **MJ365** R Jeans

# Smart *casual*

Now your team can show some style with their uniforms. Featuring a range of professional, yet casual garments with versatile designs that are really easy to wear. Garment wash soft denim shirt added to the smart casual range.





**Top row: 2275 Bella with FJ365 R Jeans, 2273 Ella with FJ365 R Jeans, 2147 Ezylin® Meghan with FJ365 R Jeans**  
**Bottom row: 4207 Gingham City Check with MJ365 R Jeans, 4207 Gingham City Check with FJK35-992**  
**Dianna Jacket and FJ365 R Jeans, 4145 Ezylin® with MJ365 R Jeans**





# THE JEANS

Our R Jeans combine comfort and durability with ethical production practices and environmental sustainability benefits.

- ✓ Recycled polyester
- ✓ Modern styling and fit with 360° comfort
- ✓ Mid rise & slim straight leg
- ✓ Internal elastic waist for the perfect fit
- ✓ High-performance 4-Way Stretch
- ✓ Pre-washed for extra comfort



### **FJ365 R Jeans**

64% Cotton, 34% Recycled Polyester, 2% Spandex  
Sizes: 6 - 26. Modern Fit

### **MJ365 R Jeans**

64% Cotton, 34% Recycled Polyester, 2% Spandex  
Sizes: 77, 82, 87, 92, 97, 102, 107, 112, 117. Modern Fit



### **Shirts left to right:**

**4773** Oliver, **2175** City Stretch® Spot Hi-Lo  
**2225** City Overknit **MSH80** Cotton Comfort



# The *Recycled* Collection

- ✓ 99% of the City Collection healthcare range is made from recycled yarns
- ✓ Sustainable and accredited products

**2284** Zip Back Tunic  
**CA7P** Jogger

# As a uniform wholesaler, we have a responsibility to the wider community, not just the people who wear our garments.

## Ethical Sourcing

We value the importance of sustainability and ethically manufactured products. We adopt ethical standards throughout our entire production process from selecting the right fabrics to manufacturers of the garment.

## Packaging

City Collection is committed to using sustainable and accredited products – packaging, swing tickets and labels.

## Community

Support us, as we continue to raise awareness about breast cancer and contribute to it's community. It's not a one day event, but every day of the year. We will make a donation to the Breast Cancer Network for every pink garment and heart print tunic sold. We've got you, You Got This CISTA!!!



## Recycled Yarn

We are continually working with our fabric suppliers to reduce our impact on the environment. Recycled polyester is now used for Ezylin®, Pippa, 4-Way Stretch, City Stretch® Spot, Petal Print, Luxury Crepe Polyester and R Jeans.

With all of these fabrics, recycled polyester is made from recycling plastic bottles into chips. These are then transformed into polyester fibres. This process diverts unwanted plastic from landfill and gives this textile a second life.



## Our certifications and supplier certifications include:



### WRAP - Worldwide Responsible Accredited Production

Global social compliance dedicated to promoting safe, lawful, humane and ethical manufacturing, ensuring safe and secure labour practices and work environments.



### SA 8000 - Ethically Correct Certified Company

International certification standard that considers the social impact of operations, encouraging commitment to social accountability and ethical standards.



### Sedex - Empowering Responsible Supply Chains

Ethical trade membership organisation working with businesses to improve working conditions in global supply chains.



### Oeko Tex Standard 100 - Tested for Harmful Substances

Standard for customer confidence and high product safety, ensuring garments are tested for harmful substances and are therefore safe for human health.



Wash & Wear, Easy Care Fabrics



Recycled Polyester



Anti-Bacterial Technology



**CO-ORDINATES**

*with versatility*



Our co-ordinating options work if you want that classic approach to your uniform, or mix and match them across our entire range.



**Left to right:**

Pinfeather

**4265** Long Sleeve with  
**MTRO-4060** Will trousers

Pinfeather

**2267** Short Sleeve

**FPA41 992** Gracie slim leg pant

Pinfeather

**2264** Long Sleeve

**FJ365** R Jeans

A man with short dark hair and a light beard is smiling at the camera. He is wearing a black, long-sleeved, button-down shirt. His hands are clasped in front of him, and he is wearing a ring on his left hand. The background is a plain, light grey color.

*Basic  
black*

'The Black Shirt' - a Cotton Rich stretch shirt, a perfect uniform staple. Pairs with the R Jeans or suiting co-ordinates.



## OLIVER

**Mens 4773** Long Sleeve  
65% Cotton, 30% Polyester, 5% Spandex  
Sizes: S - 5XL, Slim Fit

## OLIVIA

**Womens 2773** Long Sleeve  
65% Cotton, 30% Polyester, 5% Spandex  
Sizes: 6 - 30, Semi-Fitted

BLACK



Perfect  
basic

## COTTON COMFORT

A soft hand feel makes this semi-fitted shirt an easy addition to anyone's uniform. Simple features such as non-transparent white fabric makes Cotton Comfort the perfect basic.



**Womens FSH70** Long Sleeve  
Polyester/Cotton  
Sizes: 6 - 30, Semi-Fitted

**Mens MSH80** Long Sleeve  
Polyester/Cotton  
Sizes: S - 5XL, Slim Fit

BLUE

WHITE

MIDNIGHT

PINK

CHAMBRAY

*Pink and Chambray available upon request.*



*She can wear it too!*



## GINGHAM CITY CHECK

Made from 100% cotton, a stylish two toned gingham check with contrast trim on the inside collar and front placket. Slim fit style with a designer back yoke for the modern professional look that suits both corporate and casual.

**Mens 4207** Long Sleeve  
100% Cotton with Natural Stretch  
Sizes: S - 5XL, Slim Fit





*Contrast  
trim*

*100%  
Cotton*



100%  
Cotton



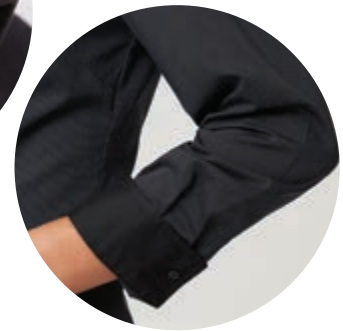
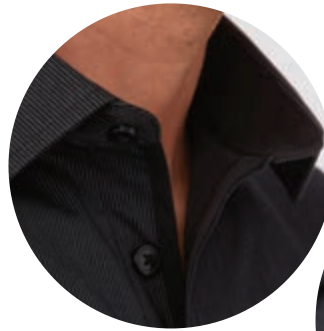
*Natural stretch!*



## XPRESSO

A favourite choice for a trendy and modern uniform, made from 100% cotton fabric with natural stretch. Featuring the new 3/4 sleeve length in the women's style.

*Contrast trims around neckline and cuffs*



*with Wonder Button*



### **Mens**

**4257** Long Sleeve  
100% Cotton with Natural Stretch  
Sizes: S - 5XL, Slim Fit

### **Womens**

**2257** Long Sleeve  
**2258** 3/4 Sleeve (Navy available upon request)  
100% Cotton with Natural Stretch  
Sizes: 6 - 30, Semi-Fitted



## PINFEATHER

Professional corporate favourite. Ladies style includes lycra for extra comfort, a princess line, three sleeve lengths, and a subtle colour palette of charcoal and blue. Co-ordinating mens style which is smart and professional and ranged in subtle tones.



*with  
Wonder  
Button*

**Womens: 2264** Long Sleeve, **2265** 3/4 Sleeve, **2267** Short Sleeve  
57% Polyester, 38% Cotton, 5% Lycra.  
Sizes: 6 - 30, Semi-Fitted

**Mens: 4265** Long Sleeve  
60% Polyester, 40% Cotton. Sizes: S - 5XL, City Fit



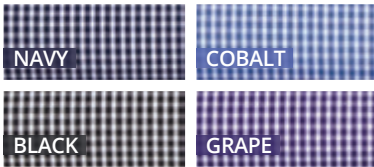




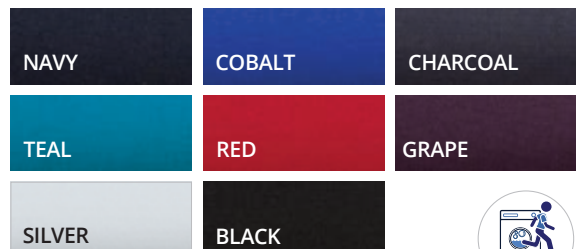
## SO EZY

Co-ordinating styles to enhance your brand. The men's easy care, cotton-rich classic check in a slim fit reflects today's contemporary look. The women's style features a gathered action back in a soft lightweight fabric with roll up sleeves.

**Mens: 4263** Long Sleeve  
60% Cotton, 40% Polyester.  
Sizes: S - 5XL, Slim Fit



**Womens: 2263** 3/4 Sleeve with Roll-up Feature  
Polyester with Natural Stretch. Sizes: 6 - 30, Action Fit





## PIPPA CHECK

A stylish mini check in soft cotton-rich fabric. Contrast button stitching and a feature trim on the inside of the collar and cuffs. Women's style features the Wonder®Button to prevent gaping.



*Button down collar*

**Mens 4222:** Long Sleeve  
60% Cotton, 40% Polyester. Sizes: S - 5XL, City Fit



*Fabric trim on inside collar and cuff*

**Womens 2444:** 3/4 Sleeve  
60% Cotton, 40% Polyester. Sizes: 6 - 26, Semi-Fitted



## CITY STRETCH® CLASSIC

Styled in a premium, non-transparent fabric that features princess lines, enhancing the overall silhouette. Also features a longer length, detailed front placket and a choice of three sleeve lengths.



**Womens 2260** Long Sleeve, **2261** 3/4 Sleeve,  
**2262** Short Sleeve  
45% Cotton, 37% Polyester, 16% CEO, 2% Lycra  
Sizes: 6 - 30, Semi-Fitted

WHITE



## TWILL SHIRT

A cotton-rich premium Twill shirt that features a sophisticated contrast trim inside the collar and sleeve placket. An exceptionally easy care fabric, this beautifully tailored garment is a corporate 'must have' piece.



### *Contrast trims*

**Mens 4200** Long Sleeve  
60% Cotton, 40% Polyester  
Sizes S - 5XL, City Fit

WHITE





## MICRO CHECK

A soft two-tone check, in an easy care cotton rich fabric. Designed for added comfort, the Micro Check is very durable making it a great utility shirt for the general work environment.

**Womens: 2121** 3/4 Sleeve  
55% Cotton, 45% Polyester. Sizes: 6 - 30, Semi-Fitted

**Mens: 4102LS** Long Sleeve, **4102SS** Short Sleeve  
55% Cotton, 45% Polyester. Sizes: S - 5XL, Full Cut





## SHADOW STRIPE

Two colour ways and two sleeve length options. A subtle classic stripe in an easy-care, cotton rich fabric.

**Womens: 2104** Short Sleeve, **2144** 3/4 Sleeve  
55% Cotton, 45% Polyester. Sizes: 6 - 30, Semi-Fitted

**Mens: 4104LS** Long Sleeve, **4104SS** Short Sleeve  
55% Cotton, 45% Polyester. Sizes: S - 5XL, Classic Fit





TOPS & SHIRTS  
LOOK GOOD  
*feel great*





Designs people want to wear, made from innovative fabrics and premium manufacturing. Our tops and shirts are of superior quality that meet the demands of today's work environments.

**Left: 2211** Long Sleeve  
**Right: MSH80** Long Sleeve



## PIPPA KNIT

Exceptionally soft and cool to wear, the Pippa Knit has a unique and versatile draped neckline with gathered front details. It creates a feminine look that is flattering to everyone.



**2221** 3/4 Sleeve, **2222** Short Sleeve  
 Polyester Matte Jersey  
 Sizes: XXS - 4X. Semi-Fitted

DARK LILAC	WHITE	BLACK
KELLY GREEN	AQUA	RED
COBALT	NAVY	JADE
GRAPE	CHARCOAL	





*Dress up  
or down*

## CITY OVERKNIT

The cardigan is a versatile essential knit that complements all other styles in our collection. Made from Australian Merino Wool blend in a low-pill yarn.

*Low-pill  
yarn*



**2225** Long Sleeve  
50% Australian  
Merino Wool,  
50% Acrylic  
Sizes: XXS - 4X,  
Semi-Fitted

NAVY

BLACK

**Also featured:**  
**2147** Long Sleeve  
Ezylin®  
Sizes: 6-30, Action Fit





## PETAL PRINT

Upgrade your uniform with this luxurious recycled jersey knit top. This timeless petal print is available in three colour options. A versatile style suitable for healthcare or corporate. Wash & Wear, Easy Care.

*Easy to wear*



**2277** Short Sleeve  
Recycled Polyester/  
Polyester, 5% Spandex  
Sizes: XXS - 5X, Semi-Fitted

NAVY/WHITE

NAVY/BLUE

BLACK/WHITE

# GRACE

Elegant and graceful, featuring cross-over sides, stitched in centre front pleat, and a slinky inner knit. Designed for amazing comfort.



**2287** Short Sleeve  
Outer - Polyester Luxury Crepe  
Inner Knit - Polyester/Spandex  
Sizes: 6 - 26, Semi-Fitted





*Longer line  
design*



*Soft  
details*

## BELLA

This style is elegant, smart and timeless, with a contrast detailed placket. A versatile option for any industry.



**2275** 3/4 Sleeve  
**2276** Short Sleeve  
Polyester Matte Jersey  
Sizes: XXS - 4X, Semi-Fitted



## ELLA

A smart polo when you are not wearing a polo! Essential everyday classic that suits any industry, co-ordinating well for a corporate or casual look. Made from our popular matte jersey, this style features an open collar and detailed placket.



**2273** 3/4 Sleeve, **2274** Short Sleeve  
Polyester Matte Jersey  
Sizes: XXS - 4X, Semi-Fitted

NAVY	CHARCOAL
ROYAL	BLACK



*Casual  
comfort*



## MEGHAN

Simple and relaxed in a luxury crepe fabric with a beautifully shaped hemline and inverted action back for movement. Features a concealed button placket and is further enhanced by a ¾ sleeve roll up option.



**2211** Long Sleeve  
Polyester Luxury Crepe  
Sizes: 6 - 26, Action Fit

ROYAL

NAVY

BLACK



*Non-transparent  
white fabric*

## EZYLIN® MEGHAN

We've taken the Meghan relaxed fit design and made it with our white Ezylin® fabrication – so it's soft, elegant and non-transparent. The sleeves can be rolled-up to become a ¾ option.



*New maternity  
style*

**2147** Long Sleeve,  
Breathable Polyester  
Sizes: 6 - 30, Action Fit

**2148** Maternity Long Sleeve  
Breathable Polyester  
Sizes: S - 1X, Action Fit

WHITE





## SOPHIA

Redefined sophistication with natural stretch, featuring a ¾ sleeve with a roll-up option. Sophia features front pintuck details for a flattering line. Made from So Ezy fabric, it is lightweight and easy to care for.



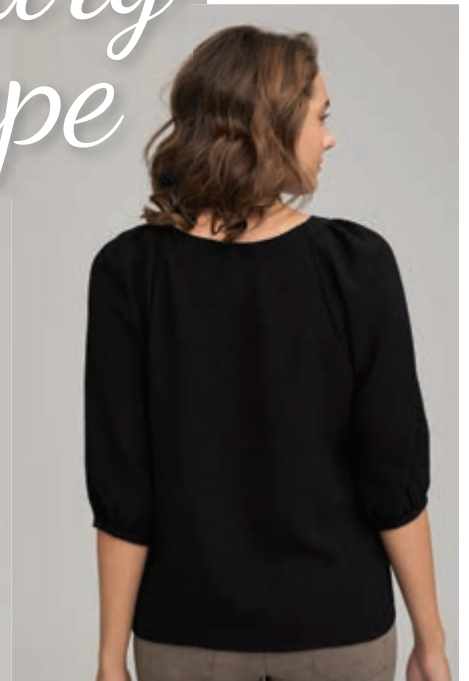
*Front pintuck  
matches the  
City Stretch® Spot*



**2215** ¾ Sleeve  
So Ezy Polyester  
with Natural Stretch  
Sizes: 6 - 30, Semi-Fitted

RED	BLACK
COBALT	NAVY

# Luxury crepe



## MARILYN

Marilyn meets the demands of the working professional offering the versatility of desk to dinner. Made in our luxury recycled crepe, featuring a gathered sleeve and detailed neckline.

**2271** 3/4 Sleeve  
Recycled Polyester Luxury Crepe  
Sizes:-6 - 26, Action Fit



BLACK

KELLY GREEN

TANGERINE



Cool to wear

## ENVY

Elegant, relaxed fit shirt with pleated front concealed buttons and action back capturing today's corporate trends. Cool to wear and ideal for busy professionals.



**2288** Short Sleeve  
Recycled Polyester Luxury Crepe Sizes: 6 - 26, Semi-Fitted

ROYAL	NAVY	BLACK
TANGERINE	KELLY GREEN	



*Relaxed  
fit*

## KEYHOLE KNIT

Enhanced by the elegant keyhole and pleat neckline, this top is made in a luxurious textured crepe that feels so silky against your skin.

*Fabric that  
moves with you*



**2295** Short Sleeve.  
95% Polyester, 5% Spandex.  
Sizes: XXS - 4X, Semi-Fitted

TEAL	ROYAL
BLACK	NAVY

## KNIT WOVEN

A unique combination of flattering woven So Ezy front with v-neckline detail and a knit back for ultimate comfort and versatile movement.



**2299** Short Sleeve  
Front - So Ezy Polyester  
Back - 94% Polyester, 6% Elastine  
Sizes: 6 - 26, Semi-Fitted

RED	ROYAL
NAVY	CHARCOAL
BLACK	

*Available in  
3 sleeve lengths*

*Trans-  
seasonal*







## SMART KNIT

Practical everyday classic. An essential, trans-seasonal versatile knit featuring a smart scooped neckline and three sleeve options.



**2290** 3/4 Sleeve, **2291** Short Sleeve, **2292** Sleeveless  
Polyester Matte Jersey. Sizes: XXS - 4X, Semi-Fitted

NAVY

ROYAL

CHILLI

SILVER

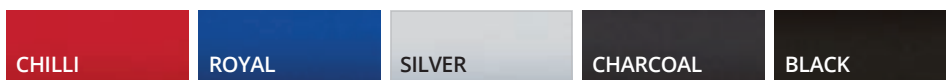
BLACK

## EVA KNIT

This elegant and versatile style features a timeless cowl neck that doesn't gape. This soft but durable knit is designed to shape and flatter your figure.



**2226** 3/4 Sleeve, **2227** Short Sleeve, Polyester Matte Jersey  
Sizes: XXS - 4X, Semi-Fitted



## CASCADE

Cleverly combining a silky inner knit cami and woven fabric to bring ultimate comfort and fit. Complemented by a smart cascading vertical pleat in a soft round neckline.

*A soft touch*



**2285** Short Sleeve Outer (woven) Polyester - Inner (knit) 95% Polyester, 5% Spandex. Sizes: 6 - 26, Semi-Fitted



SILVER

BLACK

COBALT

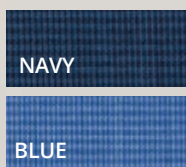
RED

AQUA

*Inner lining is a stretch knit*

## MICRO CHECK

**4102LS** Long Sleeve  
**4102SS** Short Sleeve  
55% Cotton, 45% Polyester  
Sizes: S - 5XL, Full Cut



From management to healthcare to hospitality, our mens' shirts are versatile across all industries.



100%  
Cotton

## CAPRI CHECK

**4111** Long Sleeve  
100% Superfine Cotton  
Sizes: 38 - 52, Tailored Fit



## SHADOW CHECK

**4182** Long Sleeve  
55% Cotton, 45% Polyester  
Sizes: S - 5XL, Slim Fit



Offering a range of smart, premium quality corporate casual shirts.



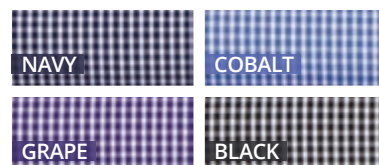
## GINGHAM CITY CHECK

**Mens 4207** Long Sleeve  
100% Cotton with Natural Stretch. Sizes: S - 5XL, Slim Fit



## SO EZY CHECK

**4263** Long Sleeve  
60% Cotton, 40% Polyester. Sizes: S - 5XL, Slim Fit

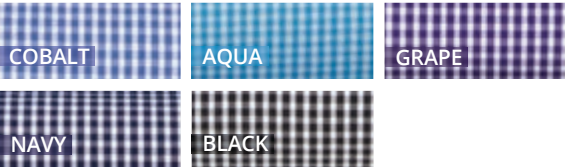


We understand that your uniform needs to withstand the rigours of daily wear, which is why we use only high-quality materials. Our shirts are made to last and maintain form ensuring your team always looks their best.



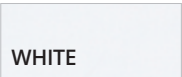
### PIPPA CHECK

**4222** Long Sleeve  
60% Cotton, 40% Polyester. Sizes: S - 5XL, City Fit



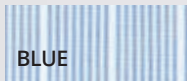
### TWILL SHIRT

**4200** Long Sleeve  
60% Cotton, 40% Polyester. Sizes S - 5XL, City Fit



## SHADOW STRIPE

**4104LS** Long Sleeve  
**4104SS** Short Sleeve  
55% Cotton, 45% Polyester  
Sizes: S - 5XL, Classic Fit





Shirts that integrate seamlessly with any uniform range.

100%  
Cotton



## XPRESSO

**4257** Long Sleeve.  
100% Cotton with Natural Stretch Sizes: S - 5XL, Slim Fit



## PINFEATHER

**Mens: 4265** Long Sleeve  
60% Polyester, 40% Cotton. Sizes: S - 5XL, City Fit



Different businesses have different requirements. We understand.



## OLIVER

**4773** Long Sleeve. 65% Cotton, 30% Polyester, 5% Spandex. Sizes: S - 5XL, Slim Fit

BLACK

## COTTON COMFORT

**MSH80** Long Sleeve. Polyester/Cotton  
Sizes: S - 5XL, Slim Fit

BLUE

WHITE

MIDNIGHT

PINK

CHAMBRAY

*Pink and Chambray available upon request.*

A mix of smart, casual and tailored shirts for men in premium fabrics. Our shirt range offers colours, stripes, and checks – styles that can be worn to mix and match and co-ordinate back with womens, for a uniform in any work environment.



**EZYLIN®**

**4145** Short Sleeve. Recycled Breathable Polyester (except white). Sizes: S - 5XL, Sports Fit

DENIM	ROYAL	BLUE
CHARCOAL	TEAL	BLACK
WHITE		

**CITY ACTIVE TOP**

**CA4T** Short Sleeve. Recycled Polyester, 5% Spandex Anti-Bacterial. Sizes: XXS - 5X, Sports Fit

TEAL	BLACK	ROYAL
NAVY	CHARCOAL	DARK TEAL



# SUITING SEPARATES

*for style & function*

Create a stylish corporate look by co-ordinating suiting separates with our shirts and tops, that will take you through the working week. A smart business investment.

**Left: 2287** Short Sleeve, **FSK45-4060** Skirt  
**Right: 4200** Long Sleeve, **MSC2-4060** Jacket  
& **MTRO-4060** Trousers



# Fully lined jacket

Whether you're in the office or out on the town, the Dianna jacket is available in two fabrics and is tailored for a perfect fit.



## Dianna

### FJK35-992

Sorbtek®  
Polyester  
Sizes: 6 - 26  
Colours: Black  
& Navy

### FJK35-4060

60% Polyester,  
40% Wool  
Sizes: 6 - 26  
Colours: Black,  
Navy & Charcoal



## Samantha

### FPA22-992

Classic pant  
flexi waist  
Sorbtek® Polyester  
Sizes: 6 - 26  
Colours: Black  
& Navy

### FPA22-4060

Ladies flexi waist  
Classic pant  
60% Polyester,  
40% Wool  
Sizes 6 - 26  
Colours: Black,  
Navy & Charcoal



## Chloe

### FPA36-992

7/8 pant flexi waist  
Sorbtek® Polyester  
Sizes: 6 - 26  
Colours: Black  
& Navy



## Miranda

### FPA40-992

Pant with exposed  
elastic back waist  
Sorbtek® Polyester  
Sizes: 6 - 26  
Colours: Black,  
Navy

## Gracie

### FPA41-992

Slim leg pant  
Sorbtek® Polyester  
Sizes: 6 - 24  
Black & Navy

### FPA41-4060

Slim leg pant  
60% Polyester,  
40% Wool  
Sizes: 6 - 24  
Colours: Black,  
Navy & Charcoal

Available colours for  
Sorbtek® Polyester



Available colours for  
60% Polyester, 40% Wool



# Classic silhouette

Our corporate skirt is designed with functional pockets and action back split, wear it with any of our shirts or tops.



**2277 Petal Print** Short Sleeve  
Recycled Polyester/Polyester,  
5% Spandex  
Sizes: XXS - 5X, Semi-Fitted  
Colours: Black/White,  
Navy/White and Navy/Blue



**FSK45-992 Maddi Skirt**  
Knee length skirt  
Sorbtek® Polyester  
Sizes 6 - 26  
Colours: Black & Navy





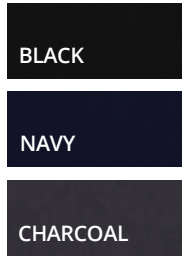
## Natasha

**FPA38-992**  
Flexi waist short  
Sorbtek® Polyester  
Sizes: 6 - 26  
Black & Navy



## So Ezy Pant

**CA3P**  
Straight leg, pull-on  
pant with angled side  
pockets Recycled  
Polyester, 5% Spandex  
Anti-bacterial  
Active fit  
Sizes: XXS - 3X  
Black, Navy & Charcoal



## Charlotte

**FSK43-896**  
Classic skort  
Polyester/Rayon  
Sizes: 6 - 26  
Black & Navy



## Maddi

**FSK45-992**  
Knee length  
front pocket skirt  
Sorbtek® Polyester  
Sizes: 6 - 26  
Black & Navy

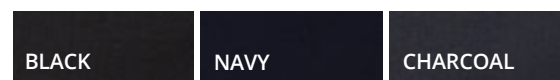


**FSK45-4060**  
60% Polyester, 40% Wool  
Ladies knee length  
front pocket skirt  
Sizes: 6-26  
Black, Navy & Charcoal

Available colours for  
**Sorbtek® Polyester**



Available colours for  
**60% Polyester, 40% Wool**





## Charles

**MSC2-4060**  
2-Button Jacket  
60% Polyester, 40% Wool  
Sizes: 82R - 132R  
Black, Navy & Charcoal



## Will

**MTRO-4060**  
Flexi Waist Trousers  
60% Polyester, 40% Wool  
Sizes: 77R - 107R, 87S - 132S  
Black, Navy & Charcoal

BLACK

CHARCOAL

NAVY

# A classic fit

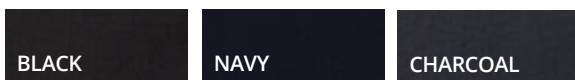
Stylish, internal flexi-waist, flat front pants, with functional pockets and adjustable centre back seam.



## Will

### MTRO-4060

Flexi Waist Trousers. 60% Polyester, 40% Wool  
 Sizes: 77R - 107R, 87S - 132S. Black, Navy & Charcoal



## Harry

### MTRO-690

Flexi Waist Trousers. 80% Polyester, 20% Viscose  
 Sizes: 77R - 107R, 87S - 132S. Black & Navy



#### REGULAR LENGTH

Waist/in	30	32	34	36	38	40	42
Waist/cm	77	82	87	92	97	102	107

#### STOUT LENGTH

Waist/in	34	36	38	40	42	44	46	48	50	52
Waist/cm	87	92	97	102	107	112	117	122	127	132



# FOR ALLIED HEALTH TEAMS

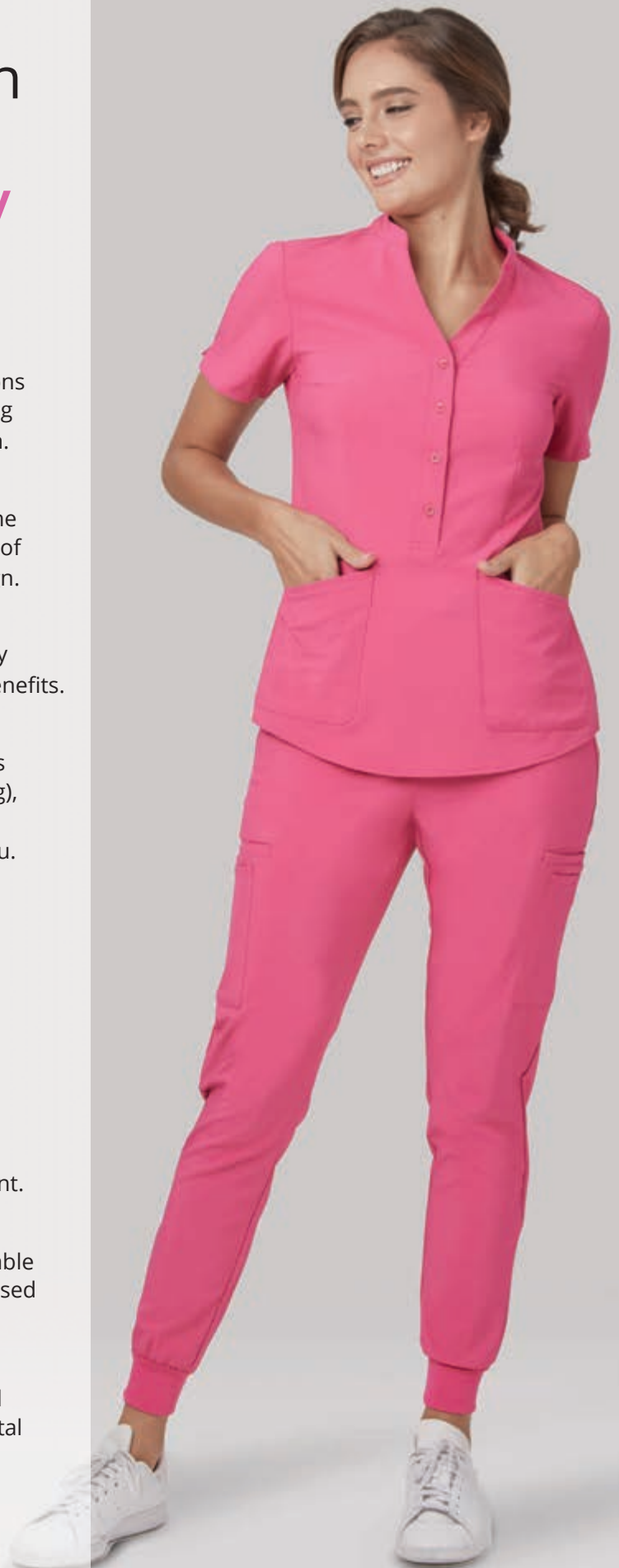
*easy care  
& easy wear*

Offering the most popular colour palettes that complement most brand identities and offer a large range of co-ordinate styles and fabrics for added diversity.



# The City Collection healthcare range targets 8 industry requirements:

- ✓ **Function and Recognition**  
Garments reflect the roles and functions of staff and each style projects a strong sense of identification and recognition.
- ✓ **A Colour Story**  
Promote a unified team look within one colour palette whilst enjoying a sense of individuality within the style and design.
- ✓ **Easy Care & Breathable Fabrics**  
Garments that are easy to wear & easy to care for, most with anti-bacterial benefits.
- ✓ **Comfort & Practicality**  
With the physical nature of many roles (bending, lifting, reaching, and twisting), fabrics, styles and sizes must create comfortable attire that moves with you.
- ✓ **Durability & Presentation**  
Hard-wearing fabrics with long lasting quality to ensure that garments have longevity and maintain a professional appearance all day, everyday.
- ✓ **A Range of Designs and Sizes**  
From the design, style and cut of the shirts, consideration has been made for your body width and height to accommodate your range of movement.
- ✓ **Quick Delivery**  
With every style, size and colour available on stock service, every order is processed and delivered promptly.
- ✓ **Sustainability**  
Recycled fabrics produced with ethical production practices and environmental sustainability benefits.



2284 Zip Back Tunic with CA7P Jogger



**2174** City Stretch® Spot Tunic with **CA3P** So Ezy Pant



**CA4T** City Active Top with **CA4P** City Active Pant



# Say it with prints

Strong patterns enhance staff identification and sense of unity. A strong pattern helps clients identify your team quickly.







### Drift Print

**2192:** Short Sleeve  
Recycled Polyester, 5% Spandex Anti-Bacterial.  
Sizes: 6 - 30, Action Fit. Colours: Teal, Blue & Navy



### City Stretch® Spot

**2172** 3/4 Sleeve, **2173** Short Sleeve  
Recycled Polyester/Polyester with Natural Stretch  
Sizes: 6 - 30, Semi-Fitted



### Heart Print Tunic

**2281** Short Sleeve  
Recycled Polyester, 5% Spandex Anti-Bacterial.  
Sizes: 4 - 30, Semi-Fitted. Colours: Blue, Navy & Teal



### Petal Print

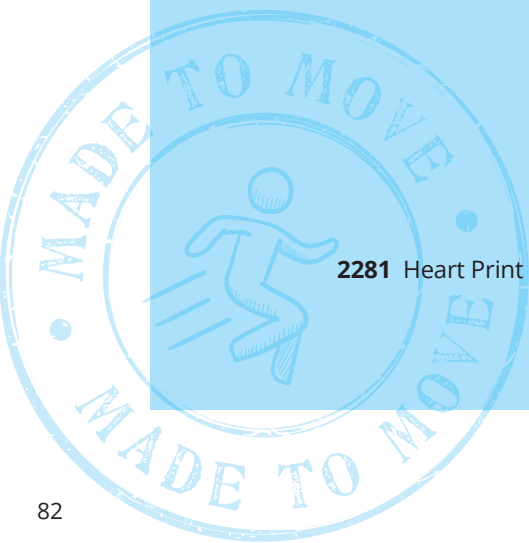
**2277** Short Sleeve  
Recycled Polyester/Polyester, 5% Spandex. Sizes: XXS - 5X  
Semi-Fitted. Colours: Navy/Blue, Navy/White & Black/White

# Recycled

## 4-Way Stretch Range

Breathable fabric made from Recycled Polyester and 5% Spandex with cool touch and anti-bacterial 4-Way Stretch.

- ✓ 4-way stretch that moves with you
- ✓ Non iron, so it's always ready to wear
- ✓ Quick drying, making it perfect for everyday wear
- ✓ Light & durable, comfortable and long lasting
- ✓ Cool to wear, made with breathable, anti-bacterial fabric, ideal for the active role



2281 Heart Print Tunic





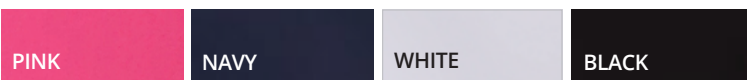



# Zip Back Tunic

Multiple pockets  
and loops for extra  
function plus a  
convenient zip-back  
pocket.



**2284** Short Sleeve. Recycled Polyester, 5% Spandex Anti-Bacterial. Sizes: 6 - 26, Semi-Fitted





*Side  
pockets*

# Chrissy

Chrissy is soft, cool to wear and incredibly versatile. A unique design featuring side pockets.



2283 Drop Shoulder Sleeve. Recycled Polyester, 5% Spandex Anti-Bacterial. Sizes: XXS - 4X, Action Fit



A woman with long, dark, curly hair is smiling and looking towards the camera. She is wearing a dark blue, short-sleeved tunic with a V-neckline and a name tag on the left chest. She is holding a dark tablet or folder in her left hand. The background is a plain, light-colored wall.

# 4-Way Stretch Tunic

Contrast subtle piped tunic, with a modest neckline multiple pockets, airflow action back and generous side splits.





2280 Short Sleeve. Recycled Polyester, 5% Spandex Anti-Bacterial. Sizes: 4 - 30, Semi-Fitted

- NAVY
- ROYAL
- TEAL
- BLACK
- CHARCOAL

*Available in a maternity option!*

# City Active 2 Top

An active scrub in a 4-Way Stretch easy care fabric, with anti-bacterial protection and multi functional pockets.

*Knit stretch  
side panels*

### Style Details

- ✓ 2 Pockets, left side
- ✓ 3 Pockets, right side
- ✓ Knit stretch side panels
- ✓ Contrast or plain colour option
- ✓ Hem split

*2 pockets  
left side*



*3 pockets  
right side*



*Shaped  
Hem*



#### **CA2T:** Top

Body: 95% Polyester, 5% Spandex

Side Panel: Polyester

Sizes: XXS - 3X, Semi-Fitted

ROYAL/NAVY

NAVY/NAVY

#### **CA2P:** Pant

Pant: 95% Polyester, 5% Spandex

Inner Pocket: Polyester

Sizes: XXS - 5X, Semi-Fitted

NAVY



# 10 Pocket Jogger

Made from Recycled Polyester, this lightweight Jogger is supremely functional with ten pockets and with fabric that moves with you.



**CA7P Jogger**  
Recycled Polyester, 5% Spandex, Anti-Bacterial  
Sizes: XXS - 3X, Active Fit



2 x hidden zip pocket (left & right)

2 x deep pockets (left & right)

2 x welt pockets (left & right)

2 x deep side pockets (left & right)

Yoga inspired waistband  
360° drawstring



2 back pockets

Tapered cut

Stretch cuff

# City Active 2 Pant

Functional all-purpose scrub bottoms. Featuring an elastic waist with drawstring and multiple pockets that are functional.



**CA2P**  
Pants - Recycled Polyester, 5% Spandex Anti-Bacterial  
Inner Pocket - Polyester Anti-Bacterial.  
Sizes: XXS - 5X , Semi-Fitted

- NAVY
- BLACK
- CHARCOAL

# So Ezy Pant

Made to move with you, the pull-on So Ezy pant is extremely comfortable, quick drying and breathable. Soft yoga inspired waistband.



**CA3P**  
Recycled Polyester, 5% Spandex Anti-Bacterial  
Sizes: XXS - 3X, Active Fit





# City Active Top

Featuring a tailored collar,  
2 button placket, side splits  
and a zipper chest pocket.





**CA4T** Short Sleeve. Recycled Polyester, 5% Spandex Anti-Bacterial. Sizes: XXS - 5XL, Sports Fit



# City Active Pant

The City Active is a unisex scrub pant made with anti-bacterial protection and features multiple pockets, a full internal drawstring waistband and key loops making this pant so functional to wear.



**CA4P** City Active Pant  
95% Recycled Polyester/Polyester,  
5% Spandex, Anti-Bacterial  
Sizes: XXS - 5XL, Active Fit

CHARCOAL

TEAL

NAVY

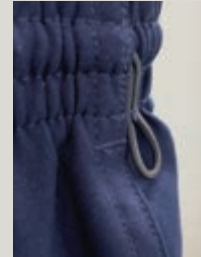
BLACK

Full elastic waist  
360° drawstring

Angled front  
pockets  
(right & left)

Side leg pockets  
(right side)

Deep  
side pocket



Key loop  
(left side)





## Pharmacy/ Dental Top

With special touches such as snap ring fasteners and pockets, this top is the perfect choice.



**Mens: CA44T** Short Sleeve  
 Recycled Polyester,  
 5% Spandex Anti-Bacterial  
 Sizes: S - 2XL, Tailored Fit  
**Features**

- Band collar
- Top and lower pocket
- Snap ring fasteners

WHITE

**Womens: CA22T** Short Sleeve  
 Recycled Polyester,  
 5% Spandex Anti-Bacterial  
 Sizes: 6 - 22, Semi-Fitted  
**Features**

- Mandarin collar
- Double front pockets
- Snap ring fasteners

WHITE

BLACK



Womens front pockets



Mens top pocket

# Ezylin<sup>®</sup> *in* Recycled Polyester

Ezylin<sup>®</sup> is a soft yet durable fabric that is machine washable for everyday wear. It features an easy care finish with minimal or no ironing required. Ezylin<sup>®</sup> styles are part of the co-ordinate range.

- ✓ The perfect fabric for all work environments
- ✓ A unique finish that keeps you cool, dry and comfortable
- ✓ 100% Breathable fabric made from recycled polyester
- ✓ Co-ordinates perfectly within our range
- ✓ Designed to fit most body shapes and sizes





Ezylin® classic style shirts and tunics can be ordered and custom made in any of the 12 colours available!

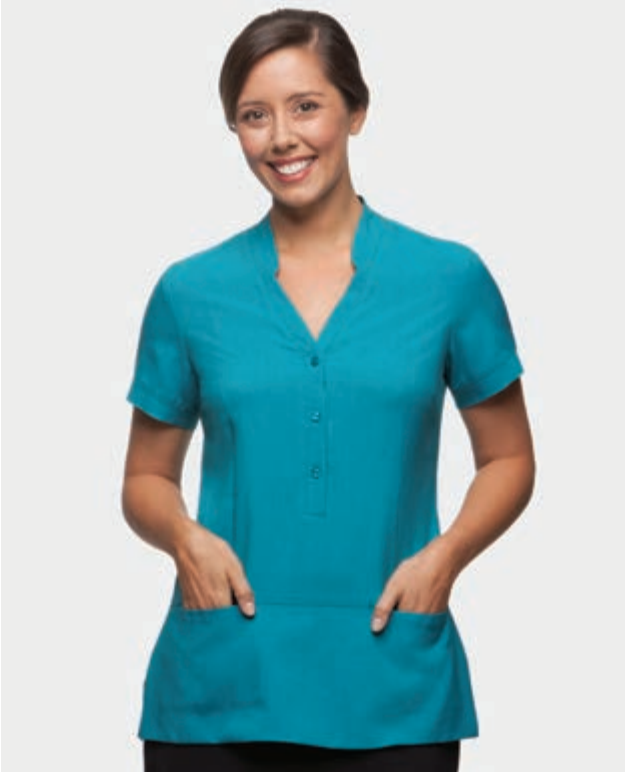


**2145** 3/4 Sleeve, **2146** Short Sleeve. Breathable Polyester/Recycled Polyester  
Sizes: 6 - 30, Semi-Fitted.

KELLY GREEN	TEAL	OCEAN	CHARCOAL	LILAC	BLACK
DENIM	ROYAL	BLUE	CHILLI	WHITE	RED

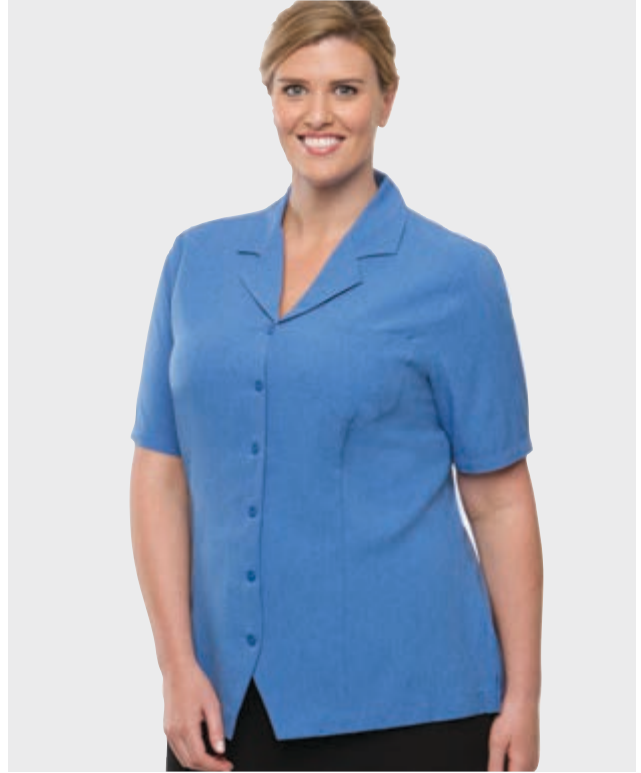
*Ezylin® styles can requested and custom made in any of the 12 colours available.*





### Ezylin® Tunic

**2151** Short Sleeve  
Breathable Polyester/Recycled Polyester  
Sizes: 6 - 30, Action Fit. Royal & Teal



### Ezylin® Tunic Overblouse

**2149** Short Sleeve  
Breathable Polyester/Recycled Polyester. Sizes: 6 - 30,  
Action Fit. Royal, Ocean, Teal & Red



### Ezylin®

**4145** Short Sleeve. Breathable Polyester/  
Recycled Polyester. Sizes: S - 5XL, Sports Fit  
Charcoal, Denim, Royal, Blue, Teal,  
Black & White



### Ezylin® Dual Pocket Stripe

**2270** Short Sleeve  
100% Breathable Polyester  
Sizes: 6 - 30. Action Fit. Blue



# *Wash & Wear* City Stretch® Spot

City Stretch® is a comfortable fabric that moves with you, is cool and light making it the perfect fit for everyday wear.

- ✓ Recycled polyester
- ✓ Natural stretch
- ✓ Non iron, quick drying
- ✓ Durable
- ✓ Light & breathable
- ✓ Wash & wear, easy care



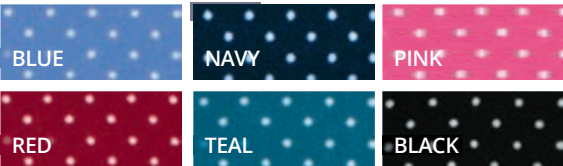


For that modern professional look, this Recycled Polyester fabric with natural stretch, offers plenty of movement and comfort.



### City Stretch® Spot Tunic

**2174** Short Sleeve  
Recycled Polyester/Polyester with Natural Stretch  
Sizes: 6 - 30, Action Fit



### City Stretch® Spot Hi-Lo

**2175** 3/4 Sleeve  
Recycled Polyester/ Polyester with Natural Stretch  
Sizes: 6 - 30, Action Fit





*with  
Wonder  
Button*

## City Stretch® Spot

**Left: 2173** Short Sleeve **Right: 2172** 3/4 Sleeve  
 Recycled Polyester/Polyester with Natural Stretch  
 Sizes: 6 - 30, Semi-Fitted



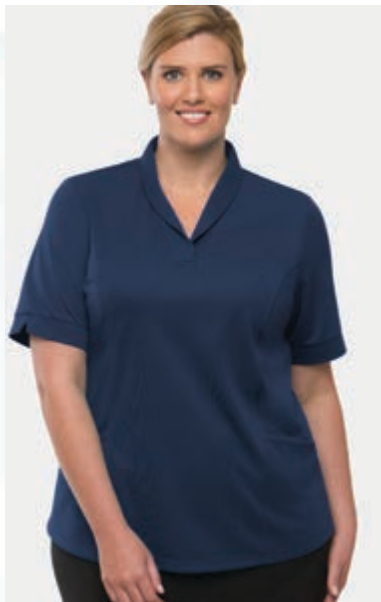
# City Health Active *with Hi-Tec Silver*

Hi-Tec Silver Technology is a unique anti-microbial and quick drying yarn that contains elements that can move moisture away from your body to the outer layer of fabric. As a result the fabric not only inhibits germs but feels really soft and fresh all the time.

- ✓ Quick absorption & drying
- ✓ Little to no ironing required
- ✓ Anti-bacterial protection, kills germs
- ✓ UV protection
- ✓ Durable
- ✓ Removes odour, superior freshness

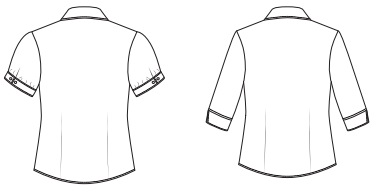
**2230:** Short Sleeve  
Polyester Hi-Tec Silver · Sizes: XXS - 5X, Semi-Fitted  
Colours: Teal, Navy, Royal & Lilac





## SHADOW STRIPE

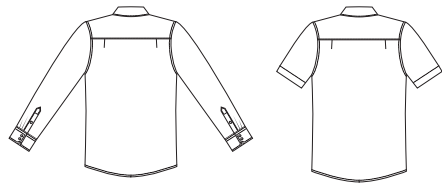
**Womens: 2104** Short Sleeve, **2144** 3/4 Sleeve  
55% Cotton, 45% Polyester (Easy care). Sizes: 6 - 30



BLUE

CHARCOAL

**Mens: 4104LS** Long Sleeve, **4104SS** Short Sleeve  
55% Cotton, 45% Polyester (Easy care). Sizes: S - 5XL

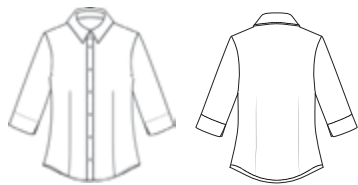


BLUE

CHARCOAL

## MICRO CHECK

**Womens: 2121** 3/4 Sleeve  
55% Cotton, 45% Polyester (Easy care). Sizes: 6 - 30



BLUE

NAVY

**Mens: 4102LS** Long Sleeve, **4102SS** Short Sleeve  
55% Cotton, 45% Polyester (Easy care). Sizes: S - 5XL



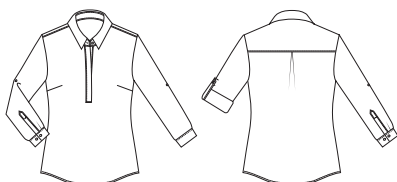
BLUE

NAVY

## EZYLIN® MEGHAN



**Womens: 2147** Long Sleeve  
Breathable Polyester. Sizes: 6 - 30

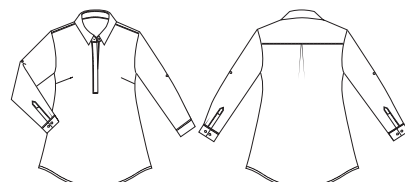


WHITE

## EZYLIN® MATERNITY TOP



**Womens: 2148** Maternity Long Sleeve  
Breathable Polyester. Sizes: S - 1X



WHITE





**Womens: 2145** 3/4 Sleeve, **2146** Short Sleeve  
Recycled Breathable Polyester. Sizes: 6 - 30



CHARCOAL	ROYAL	BLUE
DENIM	TEAL	OCEAN
LILAC	RED	CHILLI
BLACK	WHITE	KELLY GREEN

(All colours are Recycled Polyester except white.)

**Mens: 4145** Short Sleeve  
Recycled Breathable Polyester. Sizes: S - 5XL

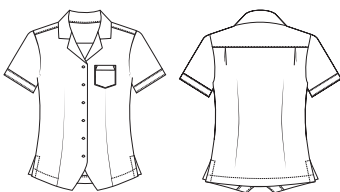


CHARCOAL	ROYAL	BLUE
DENIM	TEAL	BLACK
WHITE		

EZYLIN® OVERBLOUSE



**Womens: 2149** Short Sleeve  
Recycled Breathable Polyester. Sizes: 6 - 30

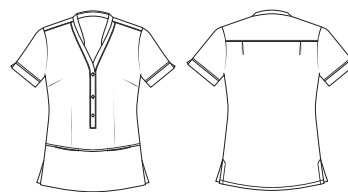


ROYAL	OCEAN
TEAL	RED

EZYLIN® TUNIC



**Womens: 2151** Short Sleeve  
Recycled Breathable Polyester. Sizes: 6 - 30

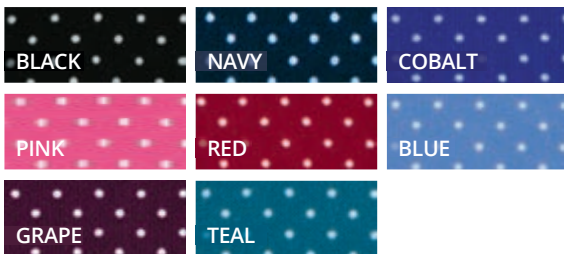


ROYAL	TEAL
-------	------

## CITY STRETCH® SPOT



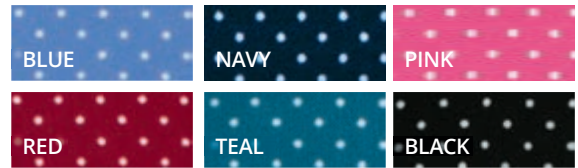
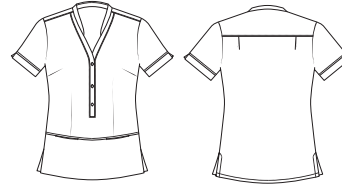
**Womens: 2172** 3/4 Sleeve, **2173** Short Sleeve  
Recycled Polyester / Polyester with Natural Stretch  
Sizes: 6 - 30



## CITY STRETCH® SPOT TUNIC



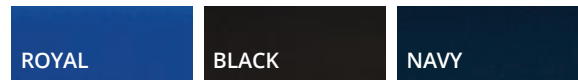
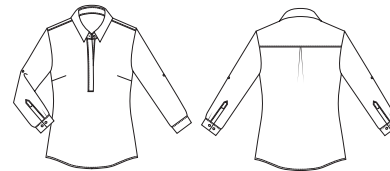
**Womens: 2174** Short Sleeve  
Recycled Polyester / Polyester with Natural Stretch  
Sizes: 6 - 30



## MEGHAN



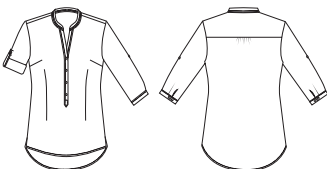
**Womens: 2211** Long Sleeve  
Polyester Luxury Crepe. Sizes: 6 - 26



## CITY STRETCH® SPOT HI-LO



**Womens: 2175** 3/4 Sleeve  
Recycled Polyester / Polyester with Natural Stretch  
Sizes: 6 - 30



## DRIFT PRINT



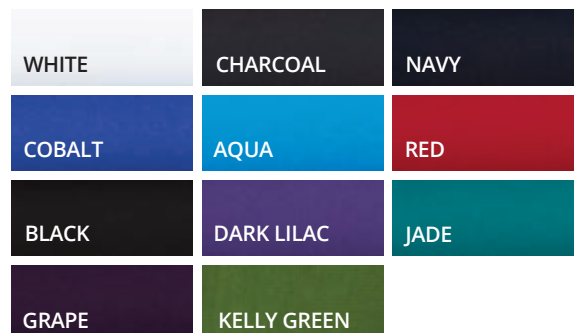
**Womens: 2192** Short Sleeve  
Recycled Polyester, 5% Spandex, Anti-Bacterial  
Sizes: 6 - 30



## PIPPA KNIT



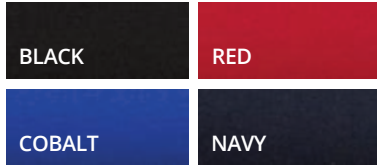
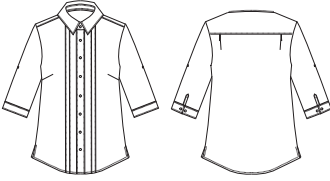
**Womens: 2221** 3/4 Sleeve, **2222** Short Sleeve  
Recycled Polyester Matte Jersey. Sizes: XXS - 4X



## SOPHIA



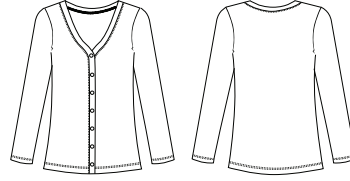
**Womens: 2215** 3/4 Sleeve  
So Ezy Polyester with Natural Stretch. Sizes: 6 - 30



## CITY OVERKNIT



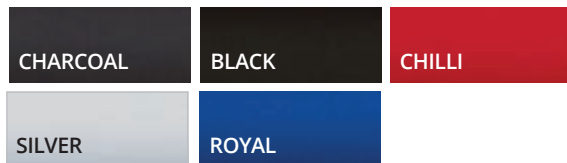
**Womens: 2225** Long Sleeve  
50% Australian Merino Wool, 50% Acrylic. Sizes: XXS - 4X



## EVA KNIT



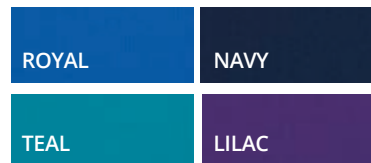
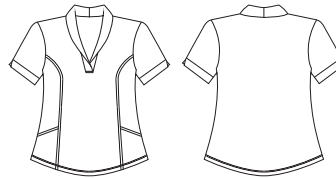
**Womens: 2226** 3/4 Sleeve, **2227** Short Sleeve  
Polyester Matte Jersey. Sizes: XXS - 4X



## CITY HEALTH ACTIVE

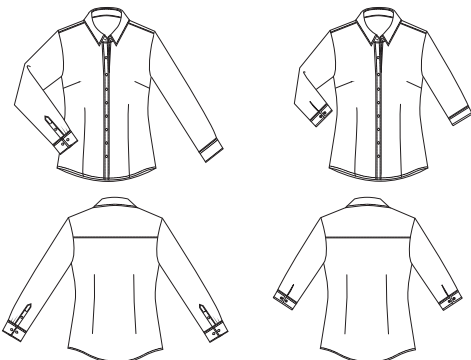


**Womens: 2230** Short Sleeve  
Polyester, Hi-Tec Silver Anti-Bacterial. Sizes: XXS - 5X



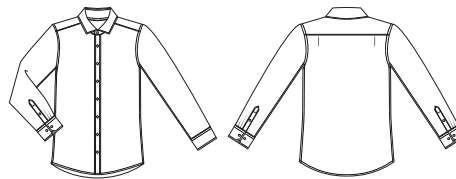
## XPRESSO

**Womens: 2257** Long Sleeve, **2258** 3/4 Sleeve  
100% Cotton With Natural Stretch (Easy care)  
Sizes: 6 - 30



2258 Navy available upon request

**Mens: 4257** Long Sleeve  
100% Cotton with Natural Stretch (Easy care)  
Sizes: S - 5XL



## CITY STRETCH® CLASSIC

**Womens 2260** Long Sleeve, **2261** 3/4 Sleeve, **2262** Short Sleeve  
45% Cotton, 37% Polyester, 16% CEO, 2% Lycra. Sizes: 6 - 30

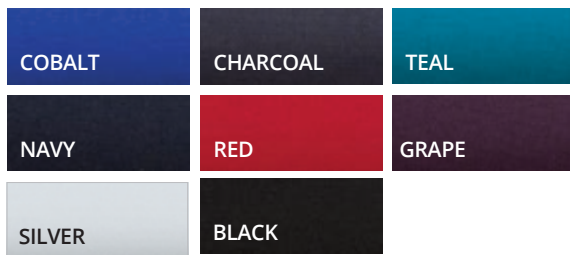
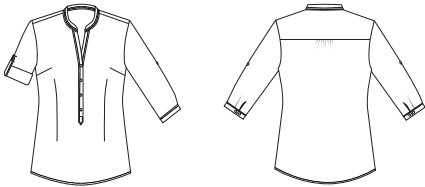


WHITE

## SO EZY

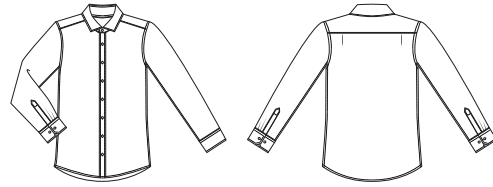


**Womens: 2263** 3/4 Sleeve  
Polyester with Natural Stretch. Sizes: 6 - 30



## SO EZY

**Mens: 4263** Long Sleeve  
60% Cotton, 40% Polyester (Easy care). Sizes: S - 5XL

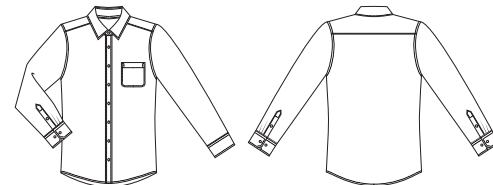


## PINFEATHER

**Womens: 2264** Long Sleeve, **2265** 3/4 Sleeve, **2267** Short Sleeve. 57% Polyester, 38% Cotton, 5% Lycra  
Sizes: 6 - 30



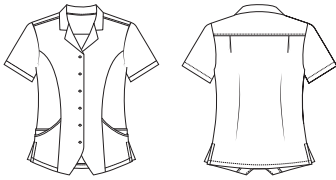
**Mens: 4265** Long Sleeve  
60% Polyester, 40% Cotton (Easy care)  
Sizes: S - 5XL



## EZYLIN® DUAL POCKET STRIPE



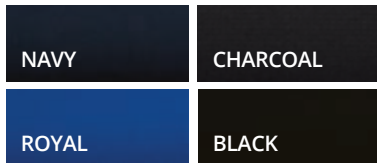
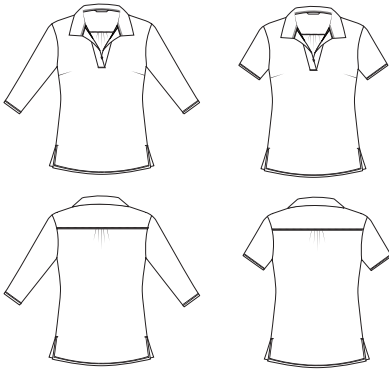
**Womens: 2270** Short Sleeve  
Breathable Polyester. Sizes: 6 - 30



## ELLA



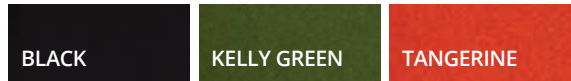
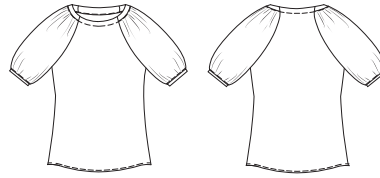
**Womens: 2273** 3/4 Sleeve, **2274** Short Sleeve  
Polyester Matte Jersey. Sizes: XXS - 4X



## MARILYN



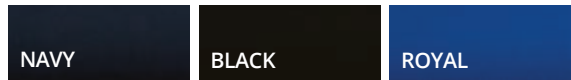
**Womens 2271** 3/4 Sleeve  
Recycled Polyester Luxury Crepe. Sizes: 6 - 26



## BELLA



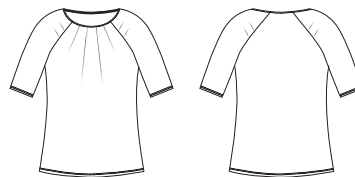
**Womens: 2275** 3/4 Sleeve, **2276** Short Sleeve  
Polyester Matte Jersey. Sizes: XXS - 4X



## PETAL PRINT



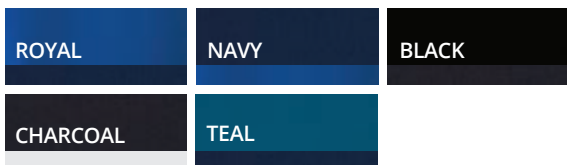
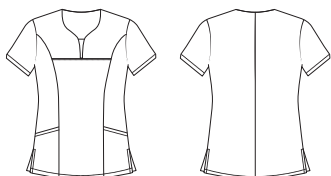
**Womens: 2277** Short Sleeve  
Recycled Polyester/Polyester, 5% Spandex  
Sizes: XXS - 5X



## 4-WAY STRETCH TUNIC



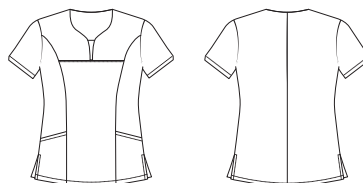
**Womens: 2280** Short Sleeve  
 Recycled Polyester, 5% Spandex Anti-Bacterial  
 Sizes: 4 - 30



## HEART PRINT TUNIC



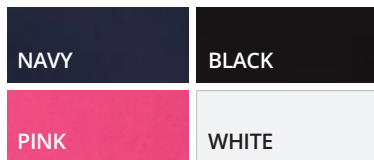
**Womens: 2281** Short Sleeve  
 Recycled Polyester, 5% Spandex Anti-Bacterial  
 Sizes: 4 - 30



## CHRISSY



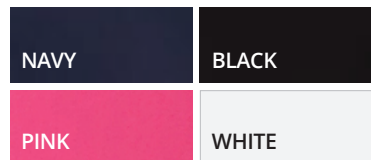
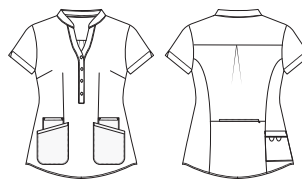
**Womens 2283** Drop Shoulder  
 Recycled Polyester, 5% Spandex Anti-Bacterial  
 Sizes: XXS - 4X



## ZIP BACK TUNIC



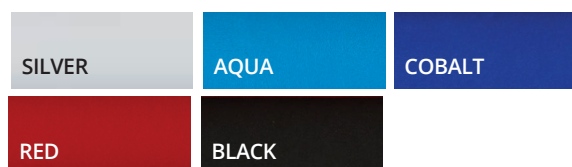
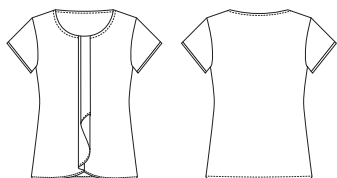
**Womens: 2284** Short Sleeve  
 Recycled Polyester, 5% Spandex Anti-Bacterial  
 Sizes: 6 - 26



## CASCADE



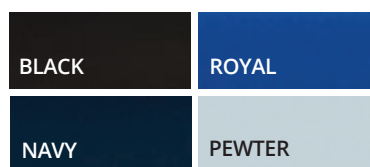
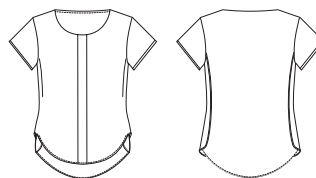
**Womens: 2285** Short Sleeve Outer (woven) - Polyester  
 Inner (knit) - 95% Polyester, 5% Spandex  
 Sizes: 6 - 26



## GRACE



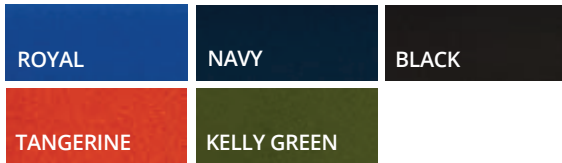
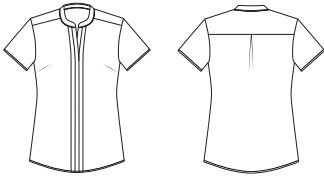
**Womens: 2287** Short Sleeve  
 Outer: Polyester Luxury Crepe. Inner: Polyester/Spandex  
 Sizes: 6 - 26



## ENVY



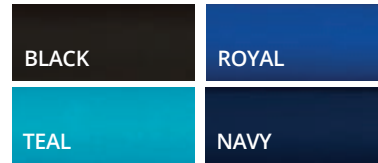
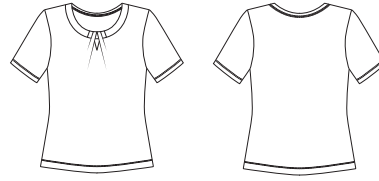
**Womens: 2288** Short Sleeve  
Recycled Polyester Luxury Crepe. Sizes: 6 - 26



## KEYHOLE KNIT



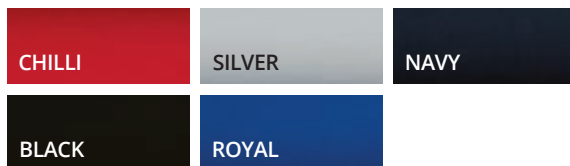
**Womens: 2295** Short Sleeve  
95% Polyester, 5% Spandex, Crepe Knit. Sizes: XXS - 4X



## SMART KNIT



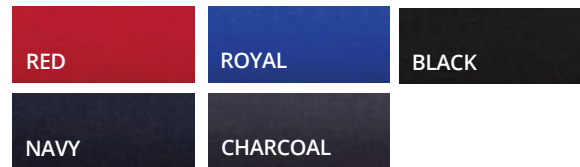
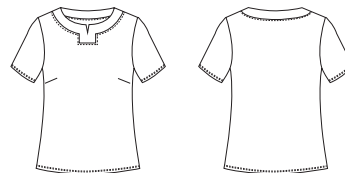
**Womens: 2290** 3/4 Sleeve, **2291** Short Sleeve  
**2292** Sleeveless. Polyester Matte Jersey. Sizes: XXS - 4X



## KNIT WOVEN

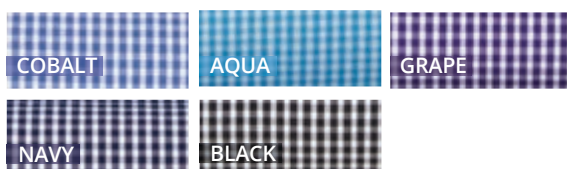
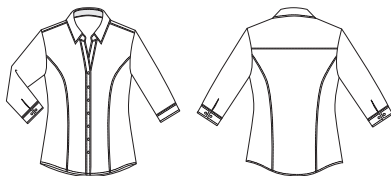


**Womens: 2299** Short Sleeve  
Front - 100% So Ezy Polyester,  
Back - 94% Polyester, 6% Elastane. Sizes: 6 - 26

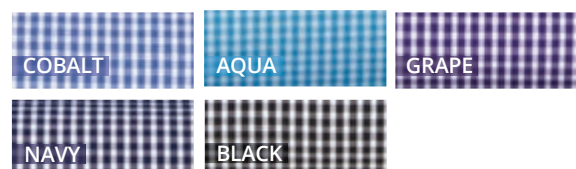
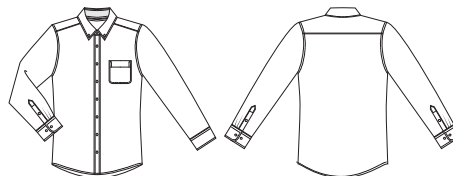


## PIPPA CHECK

**Womens: 2444** 3/4 Sleeve  
60% Cotton, 40% Polyester (Easy care)  
Sizes: 6 - 26

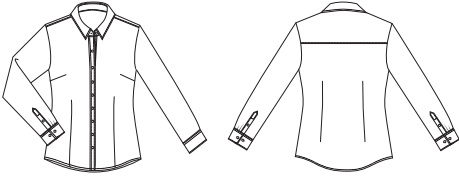


**Mens: 4222** Long Sleeve  
60% Cotton, 40% Polyester (Easy care)  
Sizes: S - 5XL



## OLIVIA

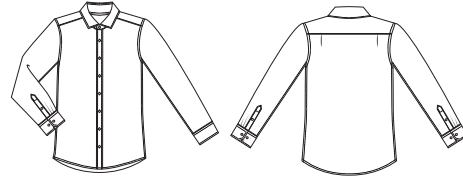
**Womens: 2773** Long Sleeve  
65% Cotton, 30% Polyester, 5% Spandex (Easy care)  
Sizes: 6 - 30



BLACK

## OLIVER

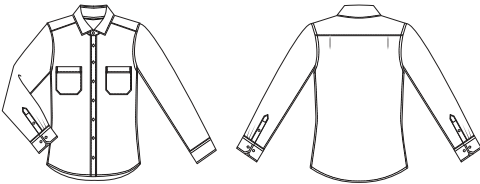
**Mens: 4773** Long Sleeve  
65% Cotton, 30% Polyester, 5% Spandex (Easy care)  
Sizes: S - 5XL



BLACK

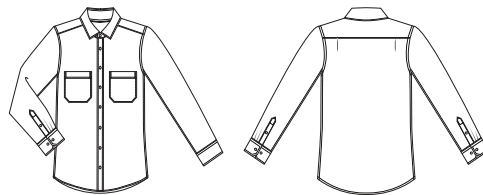
## DENIM SHIRT

**Womens 2774** Long sleeve  
65% Lyocell, 35% Cotton. Sizes: 6 - 26



DENIM

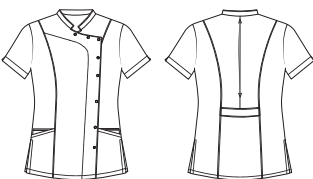
**Mens 4774** Long sleeve  
65% Lyocell, 35% Cotton. Sizes: S - 5XL



DENIM

## PHARMACY/DENTAL TOP

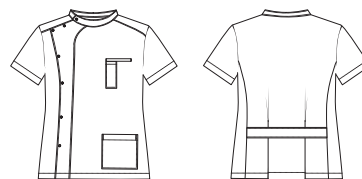
**Womens: CA22T** Short Sleeve  
Recycled Polyester, 5% Spandex Anti-Bacterial  
Sizes: 6 - 22



WHITE

BLACK

**Mens: CA44T** Short Sleeve  
Recycled Polyester, 5% Spandex Anti-Bacterial  
Sizes: S - 2XL



WHITE

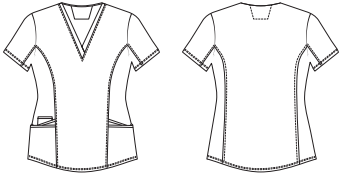




## CITY ACTIVE 2



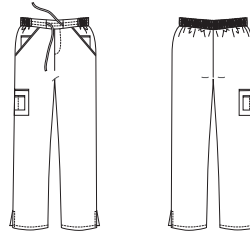
**Womens: CA2T** Short Sleeve  
Body - Recycled Polyester, 5% Spandex Anti-Bacterial  
Side Panel - Polyester Anti-Bacterial. Sizes: XXS - 3X



NAVY/NAVY

ROYAL/NAVY

**Womens: CA2P**  
Pants - Recycled Polyester, 5% Spandex Anti-Bacterial  
Inner Pocket - Polyester Anti-Bacterial. Sizes: XXS - 5X



NAVY

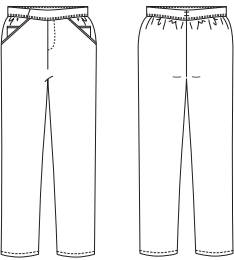
BLACK

CHARCOAL

## SO EZY PANT



**Womens: CA3P**  
Recycled Polyester, 5% Spandex Anti-Bacterial  
Sizes: XXS - 3X



NAVY

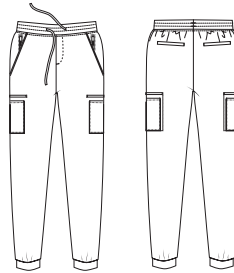
BLACK

CHARCOAL

## JOGGER



**Womens: CA7P**  
Recycled Polyester, 5% Spandex Anti-Bacterial  
Sizes: XXS - 3X



NAVY

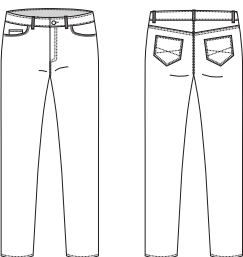
BLACK

PINK

## THE R JEANS



**Womens: FJ365**  
64% Cotton, 34% Recycled Polyester, 2% Spandex  
Sizes: 6 - 26



BLACK

LATTE

DENIM

**Mens: MJ365**  
64% Cotton, 34% Recycled Polyester, 2% Spandex  
Sizes: 77, 82, 87, 92, 97, 102, 107, 112, 117



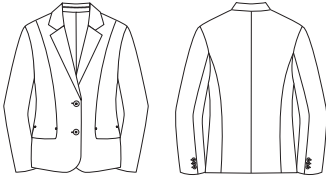
BLACK

LATTE

DENIM

## DIANNA

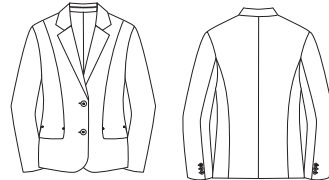
**Womens: FJK35-992** Fully lined jacket  
Sorbtek® Polyester. Sizes: 6 - 26



BLACK

NAVY

**Womens: FJK35-4060** Fully lined jacket  
60% Polyester, 40% Wool. Sizes: 6 - 26



BLACK

NAVY

CHARCOAL

## SAMANTHA

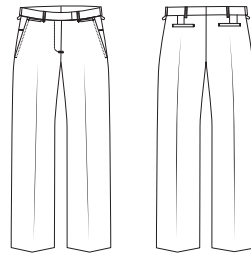
**Womens FPA22-992** Classic pant with flexi waist  
Sorbtek® Polyester. Sizes: 6 - 26



BLACK

NAVY

**Womens FPA22-4060** Classic pant with flexi waist  
60% Polyester, 40% Wool. Sizes: 6 - 26



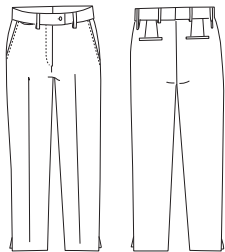
BLACK

NAVY

CHARCOAL

## CHLOE

**Womens: FPA36-992** 7/8 pant with flexi waist  
Sorbtek® Polyester. Sizes: 6 - 26

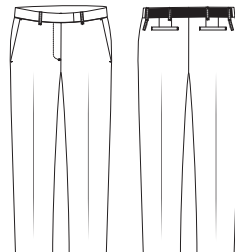


BLACK

NAVY

## MIRANDA

**Womens: FPA40-992** Pant with exposed elastic back waist. Sorbtek® Polyester. Sizes: 6 - 26

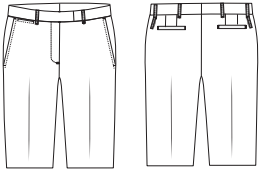


BLACK

NAVY

## NATASHA

**Womens: FPA38-992** Flexi waist short  
Sorbtek® Polyester. Sizes: 6 - 26

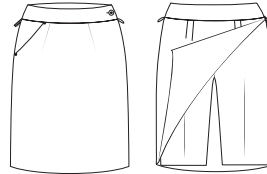


BLACK

NAVY

## CHARLOTTE

**Womens: FSK43-896** Classic skort  
Polyester/Rayon. Sizes: 6 - 26

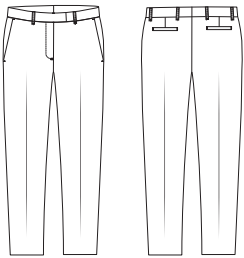


BLACK

NAVY

## GRACIE

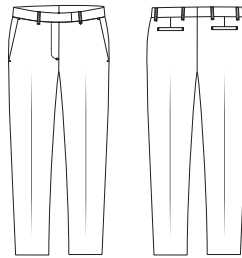
**Womens: FPA41-992** Slim leg pant  
Sorbtek® Polyester. Sizes: 6 - 24



BLACK

NAVY

**Womens: FPA41-4060** Slim leg pant  
60% Polyester, 40% Wool. Sizes: 6 - 24



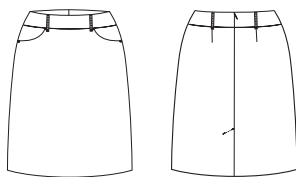
BLACK

NAVY

CHARCOAL

## MADDI

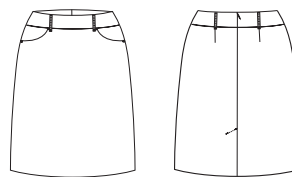
**Womens: FSK45-992** Knee length front pocket skirt  
Sorbtek® Polyester. Sizes: 6 - 26



BLACK

NAVY

**Womens: FSK45-4060** Knee length front pocket skirt  
60% Polyester, 40% Wool. Sizes: 6 - 26



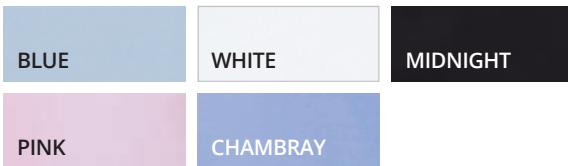
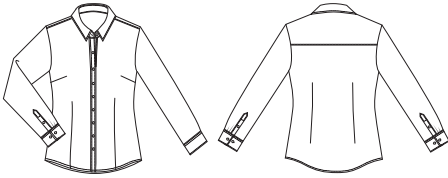
BLACK

NAVY

CHARCOAL

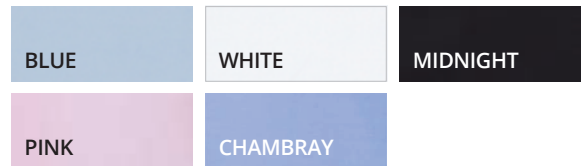
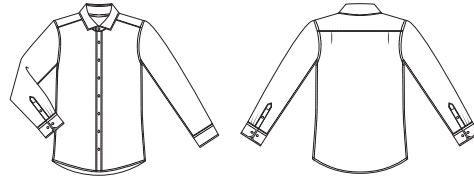
## COTTON COMFORT

**Womens: FSH70** Long Sleeve  
Polyester/Cotton. Sizes: 6 - 30



*Pink and Chambray available upon request.*

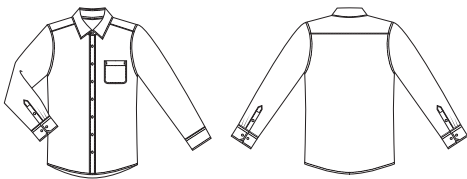
**Mens: MSH80** Long Sleeve  
Polyester/Cotton. Sizes: S - 5XL



*Pink and Chambray available upon request.*

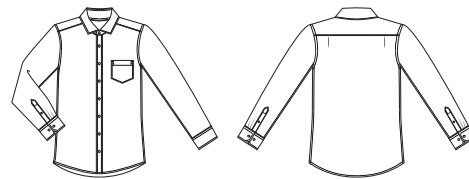
## CAPRI CHECK

**Mens: 4111** Long Sleeve  
100% Superfine Cotton (Easy care). Sizes: 38 - 52



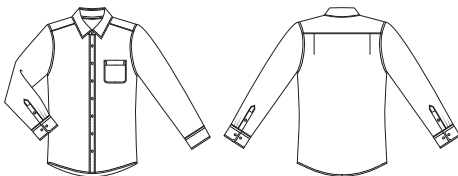
## SHADOW CHECK

**Mens: 4182** Long Sleeve  
55% Cotton, 45% Polyester (Easy care). Sizes: S - 5XL



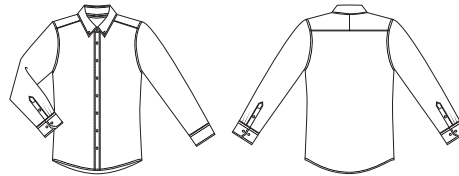
## TWILL SHIRT

**Mens: 4200** Long Sleeve  
60% Cotton, 40% Polyester (Easy care)  
Sizes S - 5XL



## GINGHAM CITY CHECK

**Mens: 4207** Long Sleeve  
100% Cotton with Natural Stretch (Easy care)  
Sizes: S - 5XL

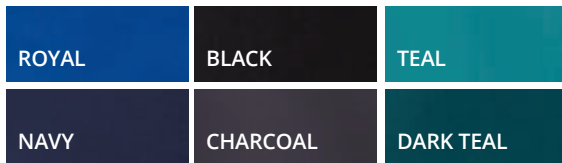
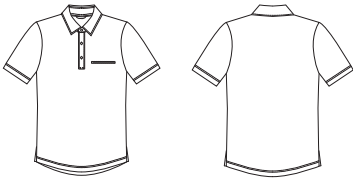


## CITY ACTIVE



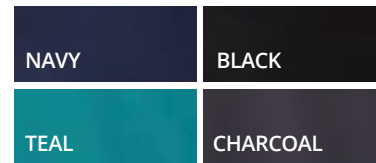
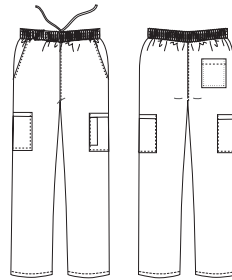
### Mens: CA4T Short Sleeve

Recycled Polyester, 5% Spandex Anti-Bacterial  
 Sizes: XXS - 5XL



### Mens: CA4P Pants

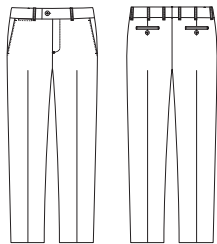
Recycled Polyester / Polyester, 5% Spandex Anti-Bacterial  
 Sizes: XXS - 5XL



## HARRY

### Mens: MTRO-690 Flexi Waist Trousers

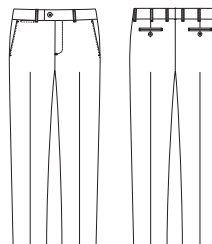
80% Polyester, 20% Viscose. Sizes: 77R - 107R  
 87S-132S



## WILL

### Mens: MTRO-4060 Flexi Waist Trousers

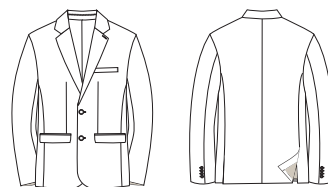
60% Polyester, 40% Wool. Sizes: 77R - 107R, 87S - 132S



## CHARLES

### Mens: MSC2-4060 2-Button Jacket

60% Polyester, 40% Wool. Sizes: 82R - 132R



# GARMENT SIZING GUIDE

## WOMENS SHIRTS

Size	4	6	8	10	12	14	16	18	20	22	24	26	28	30
Bust /cm	78	83	88	93	98	103	109	115	121	127	133	139	145	151

## WOMENS KNIT TOPS

Size	XXS	XS	S	M	L	XL	2X	3X	4X	5X
	6	8-10	10-12	12-14	14-16	18-20	20-22	22-24	24-26	26-28

## BUST MEASUREMENTS

Keeping your tape measure untwisted and level, run the tape tight up under your armpits and around the fullest, most protruding point of the bust. Hold one finger under the tape measure to ensure some room for comfort. Keep tape measure taut but not too tight.

## WOMENS JEANS

Size	6	8	10	12	14	16	18	20	22	24	26
Waist /cm	63	68	73	78	83	88	94	100	106	112	118
Hip /cm	90	95	100	105	110	115	121	127	133	139	145

## WOMENS ACTIVE PANTS

Size	XXS	XS	S	M	L	XL	2X	3X	4X
	6	8-10	10-12	12-14	14-16	18-20	20-22	22-24	26

## MENS SIZING

Neck Size	38	39	40	41	42	43	44	46	48	50	52
Size	S	M	M	L	L	XL	XL	2XL	3XL	4XL	5XL
Chest /cm	95	100	100	105	105	110	110	115	120	125	130

## NECK MEASUREMENTS

Place the measuring tape around the neck at collar height - just below the Adam's apple. Hold one finger under the tape measure to ensure some room for comfort. Keep tape measure taut but not too tight.

## CHEST MEASUREMENTS

Keeping your tape measure untwisted and level, run the tape tight up under your armpits, over the shoulder blades and around the fullest part of the chest. Hold one finger under the tape measure to ensure some room for comfort. Keep tape measure taut but not too tight. Do not puff out your chest.

## MENS JEANS

Waist /in	30	32	34	36	38	40	42	44	46
Waist /cm	77	82	87	92	97	102	107	112	117

**NOTE:** Size charts are body measurements. The garment will measure larger than the body to allow ease and comfort.

## WOMENS SHIRTS

### ACTION FIT

This is a more relaxed fit, straight through the body and longer. It is generally worn out, not tucked in. Suitable for the slightly fuller figure.

### SEMI FITTED

This style is shaped through the body with room to move. It is neither too slim nor too loose and can be worn tucked or untucked. This fit is suitable for most body types.

### FITTED

A slimmer silhouette that fits more closely to the body.

## MENS SHIRTS

### FULL CUT

This is the most generous of all fits. All garments have a box pleat in the back yoke for extra movement.

### CLASSIC FIT

Very similar to the Full Cut but narrower in the shoulders and slightly slimmer in the waist. Two side pleats in the back yoke.

### TAILORED FIT

Slightly tapered through the body but still quite generous. Suitable for most body shapes. No pleats in the back yoke.

### SPORTS FIT

Similar to our Tailored Fit but has a straighter body which is more generous through the waist. No pleats in back.

### CITY FIT

Slightly slimmer than our Sports Fit through the chest, shoulders and waist. Longer in length to stay tucked in. Two side pleats in the back yoke.

### SLIM FIT

Our slimmest mens fit. A slimmer silhouette that fits more closely to the body.

# INDEX

## Style Description ..... Page No

### WOMENS SHIRTS

2104	Shadow Stripe	35, 112
2121	Micro Check	34, 112
2144	Shadow Stripe	35, 112
2145	Ezylin®	104, 113
2146	Ezylin®	104, 113
2147	Ezylin® Meghan	5, 6, 11, 40, 49, 112
2148	Ezylin® Maternity Meghan	49, 112
2149	Ezylin® Overblouse	105, 113
2172	City Stretch® Spot	81, 109, 114
2173	City Stretch® Spot	109, 114
2175	City Stretch® Spot Hi-Lo	12, 114
2192	Drift Print	81, 114
2211	Meghan	36, 48, 114
2215	Sophia	50, 115
2257	Xpresso	24, 115
2258	Xpresso	25, 115
2260	City Stretch® Classic	32, 116
2261	City Stretch® Classic	32, 116
2262	City Stretch® Classic	32, 116
2263	So Ezy	9, 28-29, 116
2264	Pinfeather	17, 27, 116
2265	Pinfeather	26, 116
2267	Pinfeather	16, 26, 70, 116
2270	Ezylin® Dual Pocket Stripe	105, 117
2288	Envy	52-53, 119
2444	Pippa Check	30-31, 119
2773	Olivia	19, 120
2774	Denim Shirt	10, 120
FSH70	Cotton Comfort	20-21, 124

### WOMENS TOPS

2221	Pippa Knit	9, 38-39, 114
2222	Pippa Knit	38, 114
2226	Eva Knit	58, 115
2227	Eva Knit	58, 115
2271	Marilyn	51, 117
2273	Ella	11, 46, 117
2274	Ella	46-47, 117
2275	Bella	11, 45, 117
2276	Bella	44-45, 117
2277	Petal Print	41, 72, 80-81, 117
2285	Cascade	59, 118
2287	Grace	9, 42-43, 68, 118
2290	Smart Knit	57, 119
2291	Smart Knit	56-57, 119
2292	Smart Knit	57, 119
2295	Keyhole Knit	54, 119
2299	Knit Woven	9, 55, 119

### WOMENS KNITS

2225	City Overknit	12, 40, 115
------	---------------	-------------

### WOMENS BOTTOMS

CA3P	So Ezy Pant	7, 73, 79, 95, 121
CA7P	Jogger	14, 42, 78, 92-93, 121
FJ365	R Jeans	5-7, 10-13, 16-17, 121

## Style Description ..... Page No

### MENS SHIRTS + TOPS

4102LS	Micro Check	34, 60, 112
4102SS	Micro Check	60, 112
4104LS	Shadow Stripe	35, 64, 112
4104SS	Shadow Stripe	64, 112
4111	Capri Check	61, 124
4145	Ezylin® Mens	11, 67, 105, 113
4182	Shadow Check	61, 124
4200	Twill Shirt	33, 37, 63, 68, 124
4207	Gingham City Check	2, 11, 22-23, 62, 124
4222	Pippa Check	3, 30-31, 63, 119
4257	Xpresso	24-25, 65, 115
4263	So Ezy Check	28-29, 62, 116
4265	Pinfeather	2, 16, 26-27, 65, 116
4773	Oliver	2, 12, 18, 66, 120
4774	Denim Shirt	2, 10, 120
MSH80	Cotton Comfort	3, 13, 20-21, 66, 124
CA4T	City Active Top	67, 96, 125

### MENS BOTTOMS

MJ365	R Jeans	10-13, 121
-------	---------	------------

### WOMENS SUITING

FJK35-992	Dianna	5, 11, 70, 122
FJK35-4060	Dianna	5, 11, 70, 122
FPA22-992	Samantha	71, 122
FPA22-4060	Samantha	71, 122
FPA36-992	Chloe	71, 122
FPA38-992	Natasha	73, 123
FPA40-992	Miranda	71, 122
FPA41-992	Gracie	17, 71, 123
FPA41-4060	Gracie	71, 123
FSK43-896	Charlotte	73, 123
FSK45-992	Maddi	20, 68, 72-73, 80, 123
FSK45-4060	Maddi	20, 68, 72-73, 80, 123

### MENS SUITING

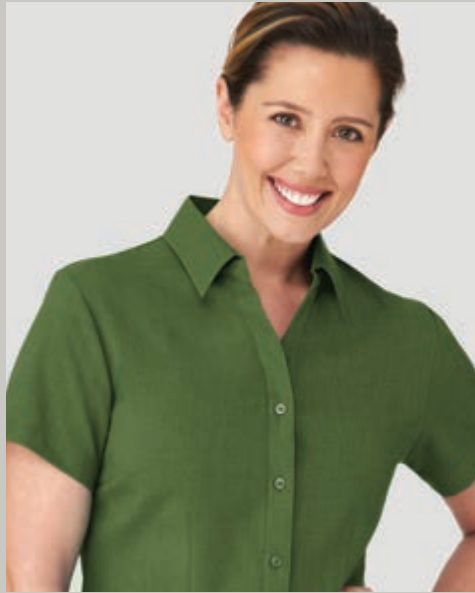
MSC2-4060	Charles	68, 74, 125
MTRO-4060	Will	16, 20, 68, 74-75, 125
MTRO-690	Harry	16, 20, 68, 74-75, 125

### WOMENS SCRUBS

2151	Ezylin Tunic	103, 105, 113
2174	City Stretch Spot Tunic	79, 95, 107-108, 114
2230	City Health Active	111, 115
2280	4-Way Stretch Tunic	76, 88-89, 118
2281	Heart Print Tunic	9, 80-81, 83, 118
2283	Chrissy	86-87, 118
2284	Zip Back Tunic	7-8, 14, 78, 84-85, 92, 113, 118
CA22T	Pharmacy/Dental Top	7, 101, 120
CA2T	City Active 2 Top	90-91, 94, 121
CA2P	City Active 2 Pant	80, 91, 94, 121
CA3P	So Ezy Pant	7, 73, 79, 95, 121
CA7P	Jogger	14, 42, 78, 92-93, 121

### MENS SCRUBS

CA4T	City Active Top	79, 96-97, 125
CA4P	City Active Pant	79, 96-97, 98-99, 125
CA44T	Pharmacy/Dental Top	100, 120



[www.citycollection.com.au](http://www.citycollection.com.au)

Colours are as close as possible to actual fabric colours but should be used as a guide only. City Collection reserve the right to update and improve the styling of items featured in our catalogue. The design and layout of this catalogue is subject to copyright©.

**CITYCOLLECTION**

— AUSTRALIA —

DRESSING FOR WORK MADE EASY