



BENCHMARK®  
HEALTH



**WE KNOW WHAT IT MEANS TO PROVIDE COMFORT**

“Healthcare workers, from doctors to nurses to support staff, are always putting patients and clients first. Beyond their fields of expertise, they provide comfort and reassurance, journeying with people through each stage of their lives. Benchmark uniforms ensure these amazing workers are always feeling their best, so they can focus on the important jobs they do.”

## BENCHMARK<sup>®</sup> HEALTH

BENCHMARK HEALTH provides the latest in Scrub design—featuring high levels of garment function, focusing on comfort, protection and care securing multiple benefits for all Health facilities. Combined with a new range of Health Separates, coordinated with current range functional polos, shirts, soft shell tops and many more Styles. These clever combinations deliver a wide choice of colour groups for any Health Facility.



NEW Scrub Tunics and pants are packaged in biodegradable material

06

### SCRUBS

12

### SHIRTS & TOPS

18

### POLO SHIRTS

23

### PANTS, SHORTS & SKIRTS

26

### T-SHIRTS

28

### JACKETS & VESTS

32

### TEAM COLOUR GROUPS

48

### LAB COATS, JACKETS & TUNICS

52

### FITTING GUIDE

54

### PRODUCT DETAIL





Contrast colour hem identifier



**OPPOSITE LEFT TO RIGHT**  
**M7650/M7660**  
*Mens & Ladies V-Neck Contrast Trim Scrub Top*

**STRETCH FABRIC**  
 160gsm - TrueDry 65% Polyester/33% Cotton/2% Elastane stretch fabric with cool effect. Anti-microbial protection/freshness.  
 Industrial laundry compliant

**STYLE**  
 Stretch contrast v-neck scrub top with multi-functional pockets and side splits

**COLOURS**  
 Navy/Charcoal, Navy/Teal, Navy/Royal, Navy/Navy (Mens only)

**SIZES**  
 Mens M7650 : XS - 5XL  
 Ladies M7660 : 2XS - 5XL (6 - 30)



Contrast pocket stitch identifier

**OPPOSITE LEFT TO RIGHT**  
**M9710/M9720**  
*Mens & Ladies Scrub Pant*

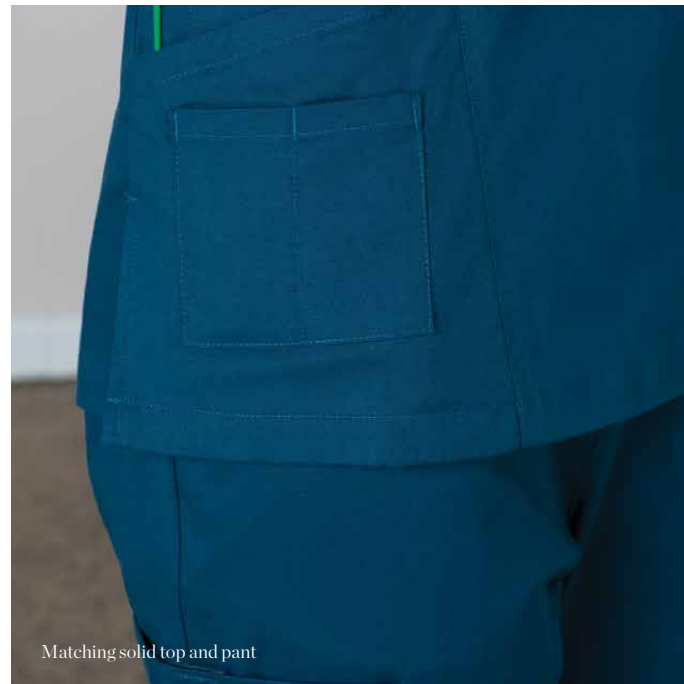
**FABRIC**  
 160gsm - TrueDry 65% Polyester/33% Cotton/2% Elastane.  
 (Anti-microbial protection/industrial laundry compliant)

**STYLE**  
 Stretch scrub pant has a semi-tapered leg with three-quarter back Elastic and waist tie. Both legs have multi-function pocketing

**COLOURS**  
 M9710 Navy  
 M9720 : Navy, Charcoal, Teal, Royal

**SIZES**  
 Mens M9710 : XS - 5XL  
 Ladies M9720 : 2XS - 5XL (6 - 30)

Please note: these garments are packaged with awareness of sustainable packaging.



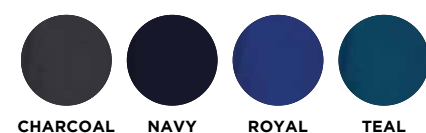
**M7640**  
*Ladies Solid Colour Short Sleeve  
 Scrub Top*

**STRETCH FABRIC**  
 160gsm - TrueDry 65%  
 Polyester/33% Cotton/ 2% Elastane  
 stretch fabric with cool effect. Anti-  
 microbial protection/freshness.  
 Industrial laundry compliant

**STYLE**  
 V-neck mock wrap front solid colour  
 scrub top, with multi-functional  
 pockets and side splits

**COLOURS**  
 Navy, Charcoal, Teal, Royal

**SIZES**  
 2XS - 5XL (6 - 30)







**M7630**  
*Unisex Scrub Top*

**FABRIC**  
65% Polyester, 35% Cotton.

**STYLE**  
V-neck. Left chest and two lower front pockets, with internal organiser pockets

**COLOURS**  
Navy, Mid-Blue

**SIZES**  
XS – 5XL

**M9370**  
*Unisex Scrub Pants*

**FABRIC**  
65% Polyester, 35% Cotton.

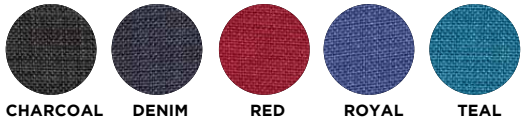
**STYLE**  
Front side pockets, one back pocket and Two cargo pockets. Cord draw string

**COLOURS**  
Navy, Mid-Blue

**SIZES**  
XS – 5XL







**LEFT TOP TO BOTTOM**  
**M7600S**  
*Mens CoolDry Short Sleeve Shirt*

**FABRIC**  
100% Breathable Polyester with moisture management providing very comfortable Fabric for Healthcare

**STYLE**  
Mens short sleeve CoolDry shirt with concealed pocket on left hand chest

**COLOURS**  
Teal, Blue, Charcoal, Royal, Denim, Red

**SIZES**  
38 – 50

**M8614S**  
*Ladies CoolDry Short Sleeve Overblouse*

**FABRIC**  
100% Breathable Polyester with moisture management providing very comfortable Fabric for Healthcare

**STYLE**  
Ladies short sleeve CoolDry overblouse with rever collar, side split hem and left front pocket

**COLOURS**  
Teal, Blue, Charcoal, Royal, Denim, Red

**SIZES**  
6 - 30



**M8600S**  
*Ladies CoolDry Short Sleeve Shirt*

**FABRIC**  
100% Breathable Polyester with moisture management providing very comfortable Fabric for Healthcare

**STYLE**  
Ladies short sleeve CoolDry shirt with open neck and curved hem

**COLOURS**  
Teal, Blue, Charcoal, Royal, Denim

**SIZES**  
6 - 30





**OPPOSITE LEFT TO RIGHT**  
**M8233**  
*Ladies Balance Stripe 3/4 Sleeve Shirt*

**FABRIC**  
60% Cotton, 40% Polyester

**STYLE**  
Ladies 3/4 Sleeve Balance Stripe Shirt  
with regular collar, button neck

**COLOURS**  
Blue/White, Mint/White, Red/White,  
Violet/White

**SIZES**  
6 - 24

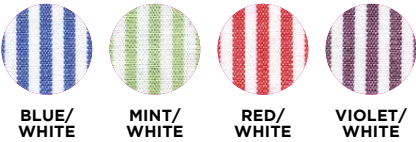
**M7231**  
*Mens Balance Stripe Short Sleeve Shirt*

**FABRIC**  
60% Cotton, 40% Polyester

**STYLE**  
Mens Short Sleeve Balance Stripe  
Shirt with regular collar, chest pocket

**COLOURS**  
Blue/White, Mint/White, Red/White,  
Violet/White

**SIZES**  
38 - 50



**BELOW**  
**M8234**  
*Ladies Balance Stripe Short Sleeve Shirt*

**FABRIC**  
60% Cotton, 40% Polyester Stripe

**STYLE**  
Ladies Short Sleeve Balance Stripe Shirt  
with adjustable sleeve cuff and action  
back with chest pocket

**COLOURS**  
Blue/White, Mint/White, Red/White,  
Violet/White

**SIZES**  
6 - 24







**LEFT**  
**M8840**  
*Sofia Ladies Short Sleeve Knit Top*

**FABRIC**  
 95% Polyester/ 5% Elastane

**STYLE**  
 The Sofia is a short sleeve knit top with a formed round neck and inset v-neck tab. The ultimate in comfort for Aged Care and associated Health centre facilities

**COLOURS**  
 Black, Navy, Dusk Grey, Pagoda, White

**SIZES**  
 6 – 26

**OPPOSITE**  
**M8850**  
*Julia Ladies Short Sleeve Knit Top*

**FABRIC**  
 95% Polyester/ 5% Elastane

**STYLE**  
 The Julia is a round neck knit top with feature front pleats, front keyhole and fold-back hemline with side splits. The back centre neckline has feature tuck pleats

**COLOURS**  
 Black, Navy, Dusk Grey, Pagoda, White

**SIZES**  
 6 – 26



Back View



**OPPOSITE LEFT TO RIGHT**  
**PS55/PS56**  
*Mens & Ladies Cotton Stretch Pique Short Sleeve Polo*

**FABRIC**  
 Cotton Stretch Pique 200gsm - 95% Cotton, 5% Elastane

**STYLE**  
 Soft feel, yet hard wearing. Full taped neck seam & half moon yoke. Twin needle stitched all over garment. Side splits.

**COLOURS**  
 Black, Navy, Azure Blue, Green Tea, White, Jasper Blue, Red, Pink, Smoke Brown

**SIZES**  
 Mens PS55 : S – 5XL  
 Ladies PS56 : 8 – 22



POLO SHIRT



*Long & short sleeve options continued next page*

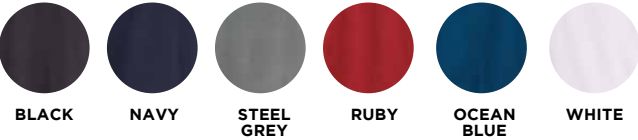
**TOP LEFT TO RIGHT**  
**PS34B/PS35**  
*Ladies TrueDry Short Sleeve Polo*  
*Mens TrueDry Long Sleeve Polo*

**FABRIC**  
 160gsm - TrueDry Cotton backing mesh. 60% Cotton / 40% Polyester

**STYLE**  
 Durable polymesh knit in TrueDry polyester with cotton back, making this shirt comfortable to wear in any Health Care Facility

**COLOURS**  
 Black, Navy, Steel Grey, Ruby, Ocean Blue, White

**SIZES**  
 Ladies PS34B : 8 – 24  
 Mens PS35 : XS – 5XL





Long & short sleeve options continued from previous page

### PS36B

*Ladies TrueDry Long Sleeve Polo*

**FABRIC**  
160gsm – TrueDry Cotton backing mesh. 60% Cotton / 40% Polyester

**STYLE**  
Natural cotton backing makes it comfortable to wear in any Health Care Facility

**COLOUR**  
Black, Navy, Ocean Blue, Steel Grey, Ruby, White

**SIZES**  
6 – 24



### PS33

*Mens TrueDry Short Sleeve Polo*

**FABRIC**  
160gsm – TrueDry cotton backing mesh. 60% Cotton / 40% Polyester

**STYLE**  
Durable polymesh knit in TrueDry polyester with cotton back, making this shirt comfortable to wear in any Health Care Facility

**COLOURS**  
Black, Navy, Steel Grey, Ocean Blue, Ruby, White

**SIZES**  
XS – 5XL



### PS76

*Ladies CoolDry Textured Polo (Mens version PS75)*

**FABRIC**  
165gsm – CoolDry Polyester self stripe jacquard – 100% Polyester

**STYLE**  
Performance Fabric designed for superior moisture evaporation. Horizontally textured self-stripe pattern on Fabric. Superb quality flat collar with side splits. Loose pocket included

**COLOURS**  
Black, Navy, White, Royal, Red

**SIZES**  
Mens PS75 : S – 5XL  
Ladies PS76 : 8 – 24







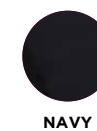
**OPPOSITE LEFT TO RIGHT**  
**PS59/PS60**  
*Mens & Ladies Bamboo Charcoal  
 Eco Fabric Short Sleeve Polo*

**FABRIC**  
 Bamboo Charcoal Interlock 165gsm  
 – 50% Polyester, 50% Bamboo  
 Charcoal

**STYLE**  
 Breathability characteristics allows  
 air permeability for increased  
 comfort and moisture dispersion.  
 Deodorized capabilities. Built in  
 Anti-Bacteria and Anti-Fungal  
 properties. Anti-static. Durable  
 performance features are effective  
 even after 50 washes. Easy care /  
 Iron free

**COLOURS**  
 Black, Navy, Ocean Blue, Storm  
 Grey, Ruby

**SIZES**  
 Mens PS59 : S – 5XL  
 Ladies PS60 : 8 – 24



**ABOVE**  
**M9442**  
*Ladies Utility Cargo Shorts  
 (Mens version M9351 – view p. 22)*

**FABRIC**  
 180gsm – 64% Polyester/34%  
 Viscose/ 2% Elastane

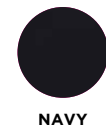
**STYLE**  
 M9442 Ladies stretch utility cargo  
 short has a semi-tapered leg with  
 side elastic. Both legs have multi-  
 function pocketing.

M9351 Mens stretch utility cargo  
 short has semi tapered leg with  
 concealed flexi-waist. Both legs have  
 multi-functioning pocketing.

**COLOURS**  
 Navy

**SIZES**  
 Ladies M9442 : 6 – 26  
 Mens M9351 : 77R - 127R





## SHORTS & PANTS



**OPPOSITE LEFT TO RIGHT**  
**M9350/M9477**  
*Mens Utility Cargo Pant*  
*Ladies Utility Cargo Skirt*

**FABRIC**  
 180gsm – 64% Polyester/34%  
 Viscose/ 2% Elastane.

**STYLE**  
 M9350 Mens stretch utility cargo  
 pant has a semi-tapered leg with  
 concealed flexi waist. Both legs have  
 multi-function pocketing.

M9477 Ladies stretch utility cargo  
 skirt has side elastic with 2 side  
 front pockets and a multi-functional  
 pocket on right side.

**COLOURS**  
 Navy

**SIZES**  
 Mens M9350 : 77R – 127R  
 Ladies M9477 : 6 – 26

**ABOVE**  
**M9480**  
*Ladies Utility Cargo Pant*

**FABRIC**  
 180gsm – 64% Polyester/34%  
 Viscose/ 2% Elastane.

**STYLE**  
 Stretch utility cargo pant has a semi-  
 tapered leg with side elastic. Both  
 legs have multi-function pocketing.

**COLOURS**  
 Navy

**SIZES**  
 6 – 26



**ABOVE**  
**TS37**  
*Mens Semi-Fitted Short Sleeve Tee*

**FABRIC**  
185gsm – 100% Combed  
Cotton Jersey

**STYLE**  
Crew neck semi-fitted tee with twin  
needle stitching with contemporary  
finish

**COLOURS**  
Black, Navy, Grey, Charcoal, White,  
Kelly Green, Royal, Red

**SIZES**  
XS – 5XL

**OPPOSITE**  
**TS38**  
*Ladies Semi-Fitted Short Sleeve Tee*

**FABRIC**  
185gsm – 100% Combed  
Cotton Jersey

**STYLE**  
Crew neck semi-fitted tee with twin  
needle stitching with contemporary  
finish

**COLOURS**  
Black, Navy, Grey, Charcoal, White,  
Kelly Green, Royal, Red

**SIZES**  
6 – 24







**LEFT TO RIGHT**  
**PF08**  
*Ladies Bonded Polar Fleece Zip Fitted Jacket (Mens version PF07)*

**FABRIC**  
 350gsm – 100% Polyester Anti-Pill Bonded Polar Fleece

**STYLE**  
 Zip Front Anti-Pill Polar Fleece Jacket with secure external zip pockets and internal pocket panels for extra convenience.

**COLOURS**  
 Black, Navy

**SIZES**  
 Ladies PF08 : 8 – 18  
 Mens PF07 : S – 5XL

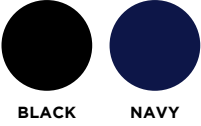
**PF09**  
*Mens Bonded Polar Fleece Zip Front Vest (Ladies version PF10)*

**FABRIC**  
 350gsm – 100% Polyester Anti-Pill Bonded Polar Fleece

**STYLE**  
 Zip Front Anti-Pill Polar Fleece Vest with secure external zip pockets and internal pocket panels for extra convenience.

**COLOURS**  
 Black, Navy

**SIZES**  
 Mens PF09 : S – 5XL  
 Ladies PF10 : 8 – 18



BLACK

NAVY

**BELOW LEFT TO RIGHT**  
**JK30**  
*Ladies Nylon Ripstop Padded Vest*

**FABRIC**  
 90gsm – Nylon Ripstop outer, 100% Nylon filling, lining 100% Polyester

**STYLE**  
 Fully lined zip front padded vest with Two zip secure pockets and inside embroidery access

**COLOURS**  
 Black, Navy

**SIZES**  
 8 – 18

**JK29**  
*Mens Nylon Ripstop Padded Vest*

**FABRIC**  
 90gsm – Nylon Ripstop outer, 100% Nylon filling, lining 100% Polyester

**STYLE**  
 Fully lined zip front padded vest with Two zip secure pockets and inside embroidery access

**COLOURS**  
 Black, Navy

**SIZES**  
 S – 3XL





**ABOVE LEFT TO RIGHT**  
**JK26**  
*Ladies Softshell Hi-Tech Vest*  
*(Mens version JK25)*

**FABRIC**  
340gsm – Bonded Softshell – shell  
face : 90% Polyester/10% Elastane  
shell back : 100% Polyester

**STYLE**  
Fully lined zip front soft shell vest  
which is water and wind resistant,  
insulative and tough wearing whilst  
offering a comfortable 4 way stretch

**COLOURS**  
Black, Navy, Charcoal, Red

**SIZES**  
Ladies JK26 : 8 – 18  
Mens JK25 : S – 5XL



**JK23**  
*Mens Softshell Hi-Tech Jacket*  
*(Ladies version JK24)*

**FABRIC**  
340gsm – Front Shell: 90%  
Polyester/10% Elastane woven –  
Bonded Back Shell : 100% Polyester  
Knit Inner Fabric: 100% Polyester  
Polar Fleece

**STYLE**  
Fully lined zip front soft shell Jacket  
which is water and wind resistant,  
insulative and tough wearing whilst  
offering a comfortable 4 way stretch

**COLOURS**  
Black, Navy, Charcoal

**SIZES**  
Mens JK23 : S – 5XL  
Ladies JK24 : 8 - 18



**BELOW**  
**M9601**  
*Ladies Knitted V-Neck Vest*

**FABRIC**  
12 gauge – 73% Viscose/27% Nylon

**STYLE**  
Modern fit, ribbed neck armhole  
and hem

**COLOURS**  
Black, Charcoal, Navy, Red

**SIZES**  
XS – 3XL (8 - 20)





Teal with Navy



FEATURED LEFT TO RIGHT  
1. M7660/M9720 2. PS59/M9351 3. PS60/JK26/M9480 4. M7640/M9720 5. PS35/M9350 6. M7650/M9710



Light Teal with Navy



FEATURED LEFT TO RIGHT  
1. M7600S/M9350 2. M8614S/M9442 3. M8840/M9480 4. M8600S/M9477





FEATURED LEFT TO RIGHT  
 1. PS76/M9480 2. M7650/M9710 3. M7640/M9720 4. M7660/M9720 5. M7600S/M9350





FEATURED LEFT TO RIGHT

1. M7600S/M9351 2. M8234/M9601/M9480 3. M8614S/M9442 4. M7231/M9350





FEATURED LEFT TO RIGHT

1. M7660/M9720 2. PS33/M9351 3. M7650/M9710 4. PS34B/M9477 5. M7640/M9720





FEATURED LEFT TO RIGHT

1. PS36B/JK30/M9477 2. PS59/M9350 3. M8614S/M9442 4. M8200S/M9480 5. M7600S/M9351





FEATURED LEFT TO RIGHT  
 1. M7650/M9710 2. M7640/M9720 3. BS08S/M9350 4. M8840/M9480 5. PS59/M9351



## Ruby with Navy



FEATURED LEFT TO RIGHT  
1. M8614S/M9442 2. M7600S/M9350 3. PS36B/M9477 4. M8233/M9480 5. PS59/M9351



**M7632**  
*Unisex Long Sleeve Lab Coat*

**FABRIC**  
190gsm - 65% Polyester, 35% Cotton, Anti-Static Twill

**STYLE**  
Concealed stud buttons front, Two lower pockets, one chest pocket with pen partition, back centred vent

**COLOUR**  
White

**SIZES**  
XS - 2XL

**TOP RIGHT**  
**M7636**  
*Mens Stud Front Short Sleeve Jacket*

**FABRIC**  
100% Polyester Mechanical Stretch

**STYLE**  
Stud buttons front, left chest pocket, round neck with stud button, back waist band with two pleats for better shape

**COLOUR**  
White

**SIZES**  
XS - 3XL

**BELOW LEFT**  
**M8636S**  
*Ladies Short Sleeve Zip Front Tunic*

**FABRIC**  
100% Polyester Mechanical Stretch

**STYLE**  
Full zip front, Two side pockets, Two side splits, back waist bank and one centre pleat for comfort

**COLOUR**  
White

**SIZES**  
6 - 24





“A well-presented healthcare team exudes confidence and professional flair. Our smart uniforms convey a sense of trust, integrity and teamwork, assuring patients and clients that they are in good hands.”





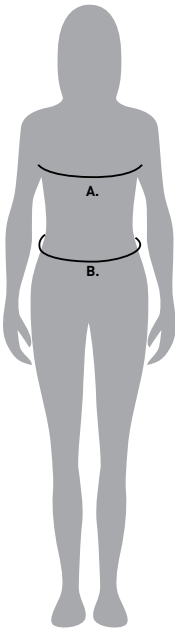
Ladies fitting guide

Find the right fit for your body type with our measurement guide.

**HOW TO MEASURE**  
*For an accurate measurement, keep the tape measure taut.*

**A. BUST**  
Measure under your arms and across shoulder blades, around the fullest part of your chest. Hold one finger between body and tape.

**B. WAIST**  
Measure around your natural waistline while holding one finger between body and tape.



Ladies Scrub Tops (M7640, M7660)										
	2XS/6	XS/8	S/10	M/12	L/14	XL/16-18	2XL/18-20	3XL/22-24	4XL/24-26	5XL/28-30
TO FIT CHEST (CM)	82	87	92	97	102	108	116	124	132	140

Ladies Scrub Pants (M9720)										
	2XS/6	XS/8	S/10	M/12	L/14	XL/16-18	2XL/18-20	3XL/22-24	4XL/24-26	5XL/28-30
TO FIT WAIST (CM)	64	69	74	79	84	90	96	102	108	114

Ladies Utility Cargo Bottoms (M9442, M9477, M9480)											
	6	8	10	12	14	16	18	20	22	24	26
TO FIT WAIST (CM)	67	72	77	82	87	94	99	104	109	114	119

Ladies Polos (PS34B, PS36B) Knit Tops (M8840, M8850) & Tees (TS38)											
	6	8	10	12	14	16	18	20	22	24	
TO FIT CHEST (CM)	82	87	92	97	102	107	112	118	124	130	

Ladies Polos (PS56, PS60, PS76)										
	8	10	12	14	16	18	20	22	24	
TO FIT CHEST (CM)	82	87	92	97	102	107	112	118	124	

Ladies Shirts (M8200S, M8233, M8234, M8600S, M8614S) & Tunic (M8636S)													
	6	8	10	12	14	16	18	20	22	24	26	28	30
TO FIT CHEST (CM)	77	82	87	92	97	102	108	114	120	126	132	138	144

Ladies Jacket (JK24, PF08), Vest (JK26, JK30, PF10) & Knitwear (M9601)													
	8/XS		10/S		12/M		14/L		16/XL		18/2XL		20/3XL
TO FIT CHEST (CM)	82		87		92		97		102		108		114

Mens fitting guide

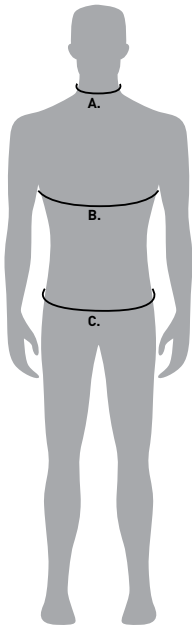
Find the right fit for your body type with our measurement guide.

**HOW TO MEASURE**  
*For an accurate measurement, keep the tape measure taut.*

**A. NECK**  
Measure around the middle of your neck at collar level, keeping the tape loose to make allowance for comfort.

**B. CHEST**  
Measure under your arms and across shoulder blades, around the fullest part of your chest. Hold one finger between body and tape.

**C. WAIST**  
Measure around your natural waistline while holding one finger between body and tape. Measure over shirt at the position your pants would normally sit.



Mens Scrub Tops (M7650)									
	XS	S	M	L	XL	2XL	3XL	4XL	5XL
TO FIT CHEST (CM)	87	92	97	102	108	114	120	126	132

Mens Scrub Pants (M9710)									
	XS	S	M	L	XL	2XL	3XL	4XL	5XL
TO FIT WAIST (CM)	77	82	87	92	98	104	110	116	122

Mens Utility Cargo Bottoms (M9350, M9351)											
	77R	82R	87R	92R	97R	102R	107R	112R	117R	122R	127R
TO FIT WAIST (CM)	77	82	87	92	97	102	107	112	117	122	127

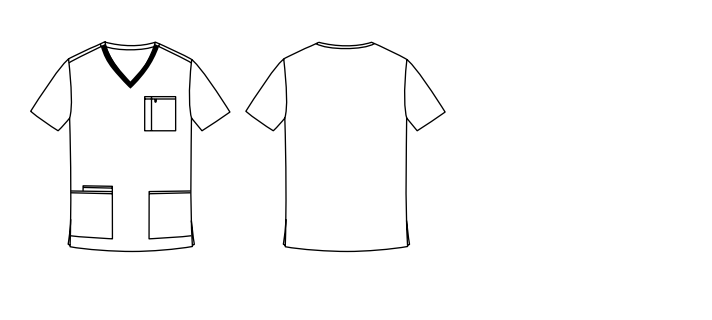
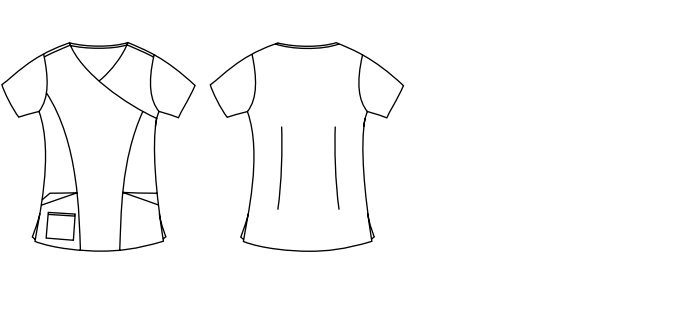
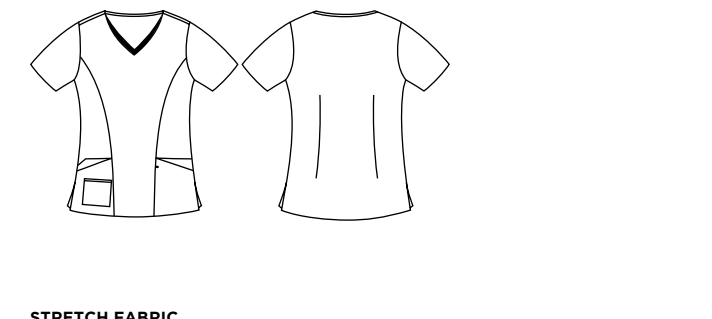

Mens Shirts (M7231, M7600S)										
	38/XS	39/S	40/M	41/L	42/L	43/XL	44/XL	46/2XL	48/3XL	50/5XL
TO FIT CHEST (CM)	88	92	96	100	104	108	112	120	128	136

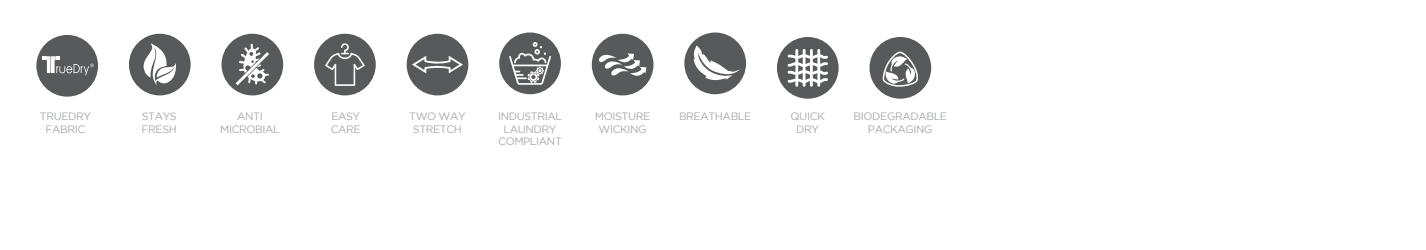
Mens Polos (PS33, PS35, PS59) & Tees (TS37)									
	XS	S	M	L	XL	2XL	3XL	4XL	5XL
TO FIT CHEST (CM)	87	92	97	102	107	112	117	122	127

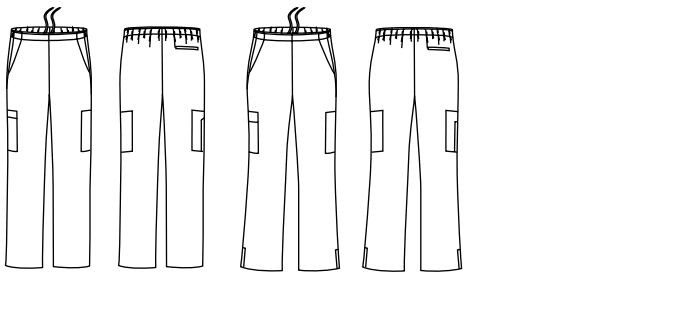
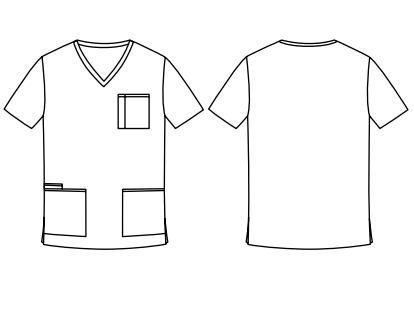
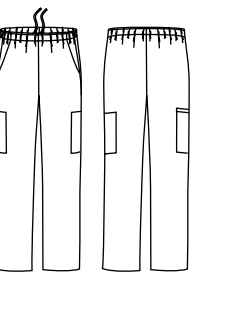
Mens Jacket (JK23, PF07), Vest (JK29, PF09) & Tunic (M7636)									
	XS	S	M	L	XL	2XL	3XL	4XL	5XL
TO FIT CHEST (CM)	87	92	97	102	107	112	117	122	127

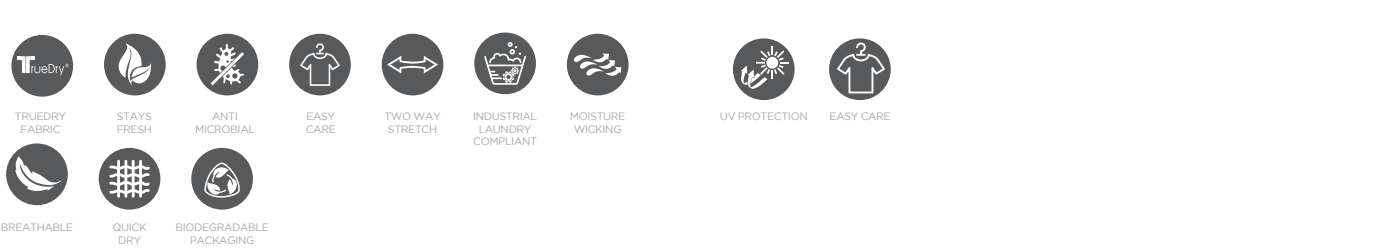
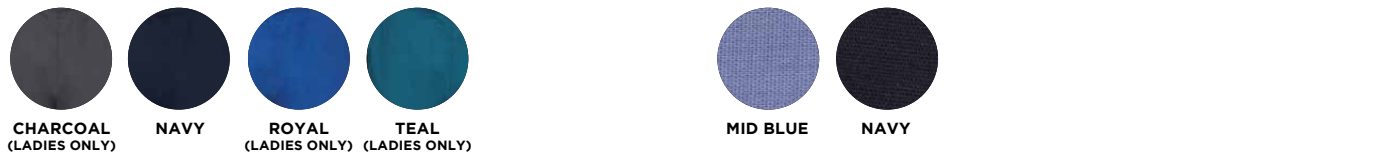
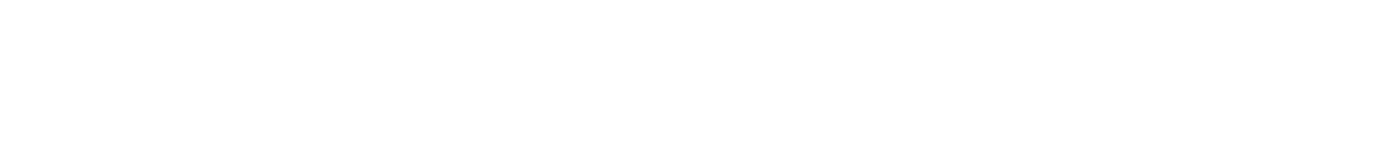
Unisex Scrub Top (M7630) & Labcoat (M7632)									
	XS/8-10	S/12	M/14	L/16	XL/18	2XL/20	3XL/22	4XL/24	5XL/26
TO FIT CHEST (CM)	87	92	97	102	107	112	117	122	127

Unisex Scrub Pants (M9370)									
	XS/8-10	S/12	M/14	L/16	XL/18	2XL/20	3XL/22	4XL/24	5XL/26
TO FIT WAIST (CM)	77	82	87	92	97	102	107	112	117

	
	
<p><b>STRETCH FABRIC</b> 160gsm - 65% Polyester/33% Cotton/2% Elastane.</p> <p><b>STYLE</b></p> <ul style="list-style-type: none"><li>Designed in Australia</li><li>ID Loop</li><li>Multi-Functional Pocketing</li><li>Side Splits</li><li>Front pocket stitching matches v-neck contrast creating the opportunity to support role differentiation where required.</li></ul> <p><b>FUNCTION</b></p> <ul style="list-style-type: none"><li>2 Way Stretch</li><li>Permanent anti-microbial protection</li><li>TrueDry® Cool Effect</li><li>Long life garment freshness</li><li>Easy Care</li><li>Industrial Laundry Compliant</li></ul> <p><b>SIZES</b> Mens M7650: XS - 5XL Ladies M7660: 2XS - 5XL (6-30)</p> <p>Please Note: These garments are packaged with awareness of sustainable packaging</p> <p><b>PAGE</b> 6.</p>	<p><b>STRETCH FABRIC</b> 160gsm - 65% Polyester/33% Cotton/2% Elastane.</p> <p><b>STYLE</b></p> <ul style="list-style-type: none"><li>Designed in Australia</li><li>ID Loop</li><li>Multi - Functional Pocketing</li><li>Side Splits</li><li>Colour matching to other styles in same colour group/s</li></ul> <p><b>FUNCTION</b></p> <ul style="list-style-type: none"><li>2 Way Stretch</li><li>Permanent anti-microbial protection</li><li>TrueDry® Cool Effect</li><li>Long life garment freshness</li><li>Easy Care</li><li>Industrial Laundry Compliant</li></ul> <p><b>SIZES</b> 2XS - 5XL (6-30)</p> <p>Please Note: These garments are packaged with awareness of sustainable packaging.</p> <p><b>PAGE</b> 8.</p>



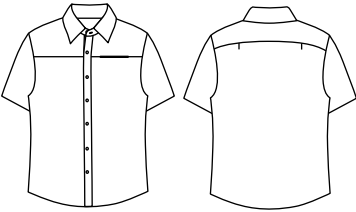
		
<p><b>STRETCH FABRIC</b> 160gsm - 65% Polyester/33% Cotton/2% Elastane.</p> <p><b>STYLE</b></p> <ul style="list-style-type: none"><li>Designed in Australia</li><li>Semi-tapered leg</li><li>3/4 Back Elastic Waist to flat front with internal waist tie</li><li>2 side front pockets and one back pocket</li><li>Multi – functional pocket on each leg</li></ul> <p><b>FUNCTION</b></p> <ul style="list-style-type: none"><li>2 Way Stretch fabric</li><li>Stretch Waist</li><li>Permanent anti-microbial protection</li><li>TrueDry® Cool Effect</li><li>Long life garment freshness</li><li>Easy Care</li><li>Industrial Laundry Compliant</li></ul> <p><b>SIZES</b> Mens M9710: XS - 5XL Ladies M9720: 2XS - 5XL (6-30)</p> <p>Please Note: These garments are packaged with awareness of sustainable packaging.</p> <p><b>PAGE</b> 7.</p>	<p><b>FABRIC</b> 180gsm - 65% Polyester, 35% Cotton</p> <p><b>STYLE</b> Front side pockets, one back pocket and Two cargo pockets. Cord draw string.</p> <p><b>SIZES</b> XS – 5XL (8 - 26)</p> <p><b>PAGE</b> 10</p>	<p><b>FABRIC</b> 180gsm - 65% Polyester, 35% Cotton</p> <p><b>STYLE</b> Front side pockets, one back pocket and Two cargo pockets. Cord draw string.</p> <p><b>SIZES</b> XS – 5XL (8 - 26)</p> <p><b>PAGE</b> 10</p>





# M7600S

Mens CoolDry Shirt



**FABRIC**  
100% Breathable Polyester

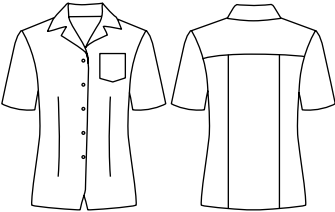
**STYLE**  
Yoke front. Concealed left chest pocket. CoolDry fabric provides moisture management for a comfortable garment in healthcare.

**SIZES**  
38 - 50

**PAGE**  
12

# M8614S

Ladies CoolDry Short Sleeve Overblouse



**FABRIC**  
100% Breathable Polyester

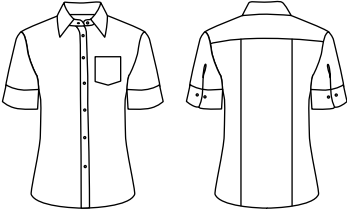
**STYLE**  
Short sleeve CoolDry overblouse with revere collar, side split hem and left front pocket. CoolDry fabric provides moisture management for a comfortable garment in healthcare.

**SIZES**  
6 - 30

**PAGE**  
12

# M8234

Ladies Balance Stripe Short Sleeve Shirt



**FABRIC**  
60% Cotton, 40% Polyester Stripe

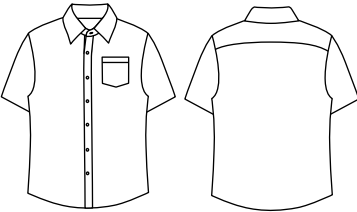
**STYLE**  
Ladies Short Sleeve Balance Stripe Shirt with adjustable sleeve cuff and action back with chest pocket.

**SIZES**  
6 - 24

**PAGE**  
15

# M7231

Mens Balance Stripe Short Sleeve Shirt



**FABRIC**  
60% Cotton, 40% Polyester Stripe

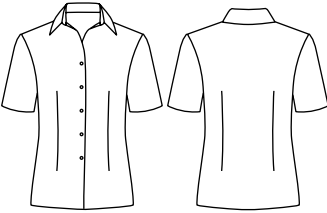
**STYLE**  
Mens Short Sleeve Balance Stripe Shirt with regular collar, chest pocket.

**SIZES**  
38 - 50

**PAGE**  
15

# M8600S

Ladies CoolDry Short Sleeve Shirt

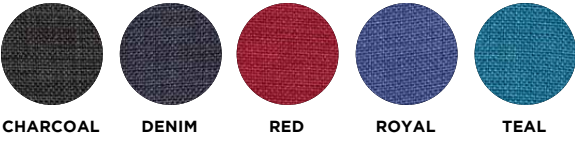


**FABRIC**  
100% Breathable Polyester

**STYLE**  
Short sleeve CoolDry shirt with open neck and curved hem. CoolDry fabric provides moisture management for a comfortable garment in healthcare.

**SIZES**  
6 - 30

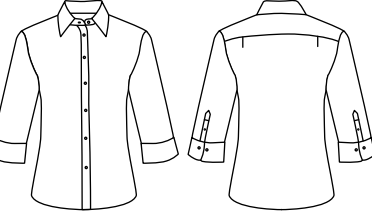
**PAGE**  
13



CHARCOAL DENIM RED ROYAL TEAL

# M8233

Ladies Balance Stripe 3/4 Sleeve Shirt



**FABRIC**  
60% Cotton, 40% Polyester Stripe

**STYLE**  
Ladies 3/4 Sleeve Balance Stripe Shirt with adjustable sleeve cuff.

**SIZES**  
6 - 24

**PAGE**  
15



BLUE/WHITE MINT/WHITE RED/WHITE VIOLET/WHITE

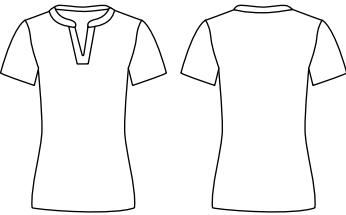


COOLDRY FABRIC MOISTURE WICKING ANTI BACTERIAL UV PROTECTION QUICK DRY BREATHABLE EASY CARE



# M8840

Sofia Short Sleeve Knit Top



**FABRIC**  
95% Polyester/ 5% Elastane

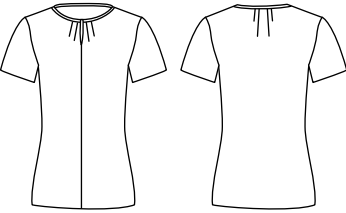
**STYLE**  
The Sofia is a short sleeve knit top with a formed round neck and inset v-neck tab. The ultimate in comfort for Aged Care and associated Health centre facilities.

**SIZES**  
6 -26

**PAGE**  
16

# M8850

Julia Short Sleeve Knit Top



**FABRIC**  
95% Polyester/ 5% Elastane

**STYLE**  
The Julia is a round neck knit top with feature front pleats, front keyhole and fold-back hemline with side splits. The back centre neckline has feature tuck pleats.

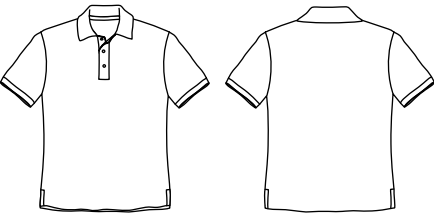
**SIZES**  
6 - 26

**PAGE**  
17



# PS55

Mens Cotton Stretch Short Sleeve Polo



**FABRIC**  
Cotton Stretch Pique 200gsm - 95% Cotton,5% Elastane

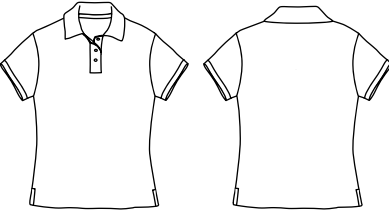
**STYLE**  
Soft feel, yet hard wearing. Full taped neck seam & half moon yoke. Twin needle stitched all over garment. Side splits.

**SIZES**  
S - 5XL

**PAGE**  
19

# PS56

Ladies Cotton Stretch Short Sleeve Polo



**FABRIC**  
Cotton Stretch Pique 200gsm - 95% Cotton,5% Elastane

**STYLE**  
Soft feel, yet hard wearing. Full taped neck seam & half moon yoke. Twin needle stitched all over garment. Side splits.

**SIZES**  
8 - 22

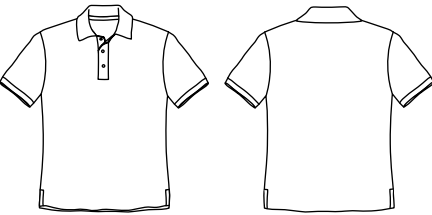
**PAGE**  
19



COTTON  
STRETCH  
FABRIC

# PS33

Mens TrueDry Short Sleeve Polo



**FABRIC**  
160gsm – TrueDry cotton backing mesh. 60% Cotton / 40% Polyester

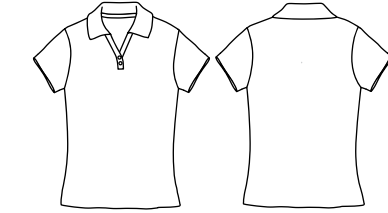
**STYLE**  
Durable polymesh knit in TrueDry polyester with cotton back, making this shirt comfortable to wear in any Health Care Facility.

**SIZES**  
XS – 5XL

**PAGE**  
21

# PS34B

Ladies TrueDry Short Sleeve Polo



**FABRIC**  
160gsm – TrueDry cotton backing mesh. 60% Cotton / 40% Polyester

**STYLE**  
Durable polymesh knit in TrueDry polyester with cotton back, making this shirt comfortable to wear in any Health Care Facility.

**SIZES**  
8 - 24

**PAGE**  
19



TRUEDRY  
FABRIC



STAYS  
FRESH



ANTI  
MICROBIAL



EASY  
CARE



TWO WAY  
STRETCH



INDUSTRIAL  
LAUNDRY  
COMPLIANT



MOISTURE  
WICKING



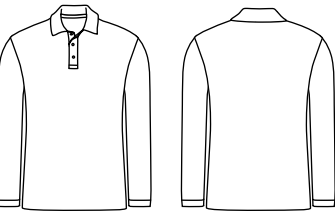
BREATHABLE



QUICK  
DRY

# PS35

Mens TrueDry Long Sleeve Polo



**FABRIC**  
160gsm – TrueDry cotton backing mesh. 60% Cotton / 40% Polyester

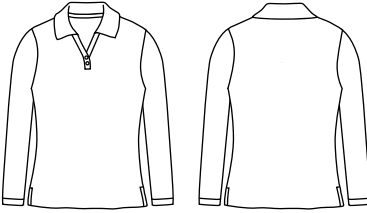
**STYLE**  
Durable polymesh knit in TrueDry polyester with cotton back, making this shirt comfortable to wear in any Health Care Facility.

**SIZES**  
XS – 5XL

**PAGE**  
19

# PS36B

Ladies TrueDry Long Sleeve Polo



**FABRIC**  
160gsm – TrueDry cotton backing mesh. 60% Cotton / 40% Polyester

**STYLE**  
Durable polymesh knit in TrueDry polyester with cotton back, making this shirt comfortable to wear in any Health Care Facility.

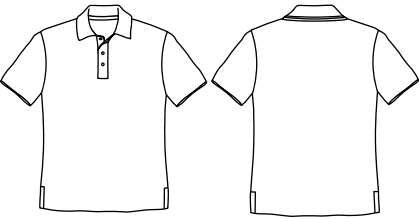
**SIZES**  
8 - 24

**PAGE**  
20



PS75

Mens CoolDry Textured Polo



**FABRIC**  
165gsm – CoolDry polyester self stripe jacquard – 100% polyester

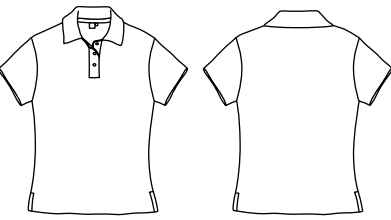
**STYLE**  
Performance Fabric designed for superior moisture evaporation. Horizontally textured self-stripe pattern on Fabric. Superb quality flat collar with side splits. Loose pocket included.

**SIZES**  
S – 5XL

**PAGE**  
21

PS76

Ladies CoolDry Textured Polo



**FABRIC**  
165gsm – CoolDry polyester self stripe jacquard – 100% polyester

**STYLE**  
Performance Fabric designed for superior moisture evaporation. Horizontally textured self-stripe pattern on Fabric. Superb quality flat collar with side splits. Loose pocket included.

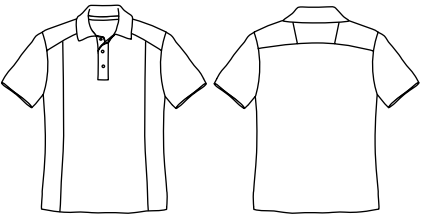
**SIZES**  
8 – 24

**PAGE**  
21



PS59

Mens Bamboo Charcoal Eco Fabric Short Sleeve Polo



**FABRIC**  
Bamboo Charcoal Interlock 165gsm – 50% Polyester, 50% Bamboo Charcoal

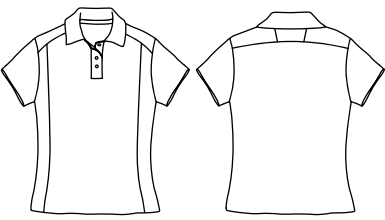
**STYLE**  
Breathability characteristics allows air permeability for increased comfort and moisture dispersion. Deodorized capabilities. Built in Anti-Bacteria and Anti-Fungal properties. Anti-static. Durable performance features are effective even after 50 washes. Easy care / Iron free.

**SIZES**  
S – 5XL

**PAGE**  
22

PS60

Ladies Bamboo Charcoal Eco Fabric Short Sleeve Polo



**FABRIC**  
Bamboo Charcoal Interlock 165gsm – 50% Polyester, 50% Bamboo Charcoal

**STYLE**  
Breathability characteristics allows air permeability for increased comfort and moisture dispersion. Deodorized capabilities. Built in Anti-Bacteria and Anti-Fungal properties. Anti-static. Durable performance features are effective even after 50 washes. Easy care / Iron free.

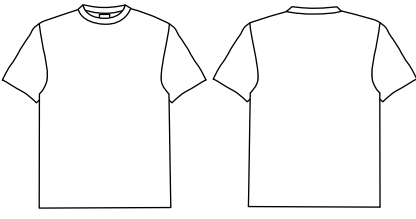
**SIZES**  
8 – 24

**PAGE**  
22



TS37

Mens semi-fitted Tee



**FABRIC**  
185gsm – 100% Combed Cotton Jersey

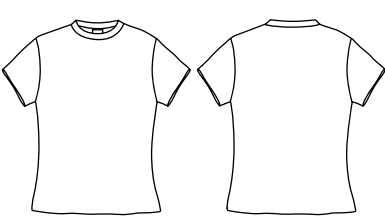
**STYLE**  
Crew neck semi-fitted tee with twin needle stitching with contemporary finish.

**SIZES**  
XS – 5XL

**PAGE**  
26

TS38

Ladies semi-fitted tee



**FABRIC**  
185gsm – 100% Combed Cotton Jersey

**STYLE**  
Crew neck semi-fitted tee with twin needle stitching with contemporary finish.

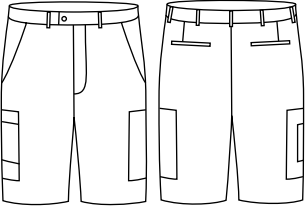
**SIZES**  
6 - 24

**PAGE**  
27



M9351

Mens Utility Cargo Shorts



**FABRIC**  
180gsm – 64% Polyester/34% Viscose/ 2% Elastane

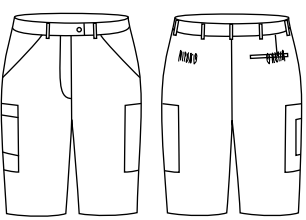
**STYLE**  
Semi tapered leg with concealed flexi-waist. Both legs have multi-functioning pocketing.

**SIZES**  
77 - 127

**PAGE**  
23

M9442

Ladies Utility Cargo Shorts



**FABRIC**  
180gsm – 64% Polyester/34% Viscose/ 2% Elastane

**STYLE**  
Semi-tapered leg with side elastic. Both legs have multi-function pocketing.

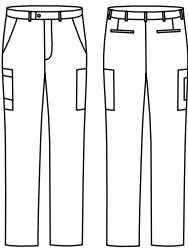
**SIZES**  
6 – 26

**PAGE**  
23



# M9350

Mens Utility Cargo Pant



**FABRIC**  
180gsm – 64% Polyester/34% Viscose/ 2% Elastane.

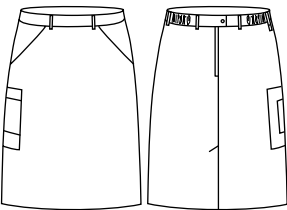
**STYLE**  
Utility cargo pant has a semi-tapered leg with concealed flexi waist. Both legs have multi-function pocketing.

**SIZES**  
77 – 127

**PAGE**  
25

# M9477

Ladies Utility Cargo Skirt



**FABRIC**  
180gsm – 64% Polyester/34% Viscose/ 2% Elastane.

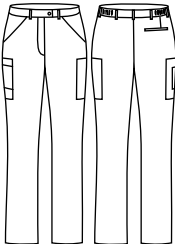
**STYLE**  
Side elastic with 2 side front pockets and a multi-functional pocket on right side.

**SIZES**  
6 – 26

**PAGE**  
25

# M9480

Ladies Utility Cargo Pant



**FABRIC**  
180gsm – 64% Polyester/34% Viscose/ 2% Elastane.

**STYLE**  
Stretch utility cargo pant has a semi-tapered leg with side elastic. Both legs have multi-function pocketing.

**SIZES**  
6 – 26

**PAGE**  
25



NAVY



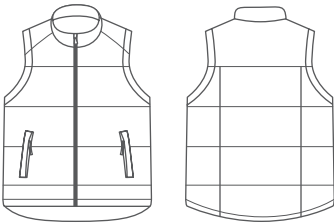
EASY CARE



TWO WAY STRETCH

# JK29

Mens Nylon Ripstop Padded Vest



**FABRIC**  
90gsm – Nylon Ripstop outer, 100% nylon filling, lining 100% polyester

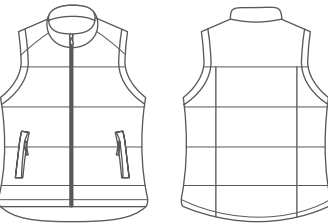
**STYLE**  
Fully lined zip front padded vest with Two zip secure pockets and inside embroidery access.

**SIZES**  
S – 3XL

**PAGE**  
29

# JK30

Ladies Nylon Ripstop Padded Vest



**FABRIC**  
90gsm – Nylon Ripstop outer, 100% nylon filling, lining 100% polyester

**STYLE**  
Fully lined zip front padded vest with Two zip secure pockets and inside embroidery access.

**SIZES**  
8 – 18

**PAGE**  
29



BLACK



NAVY



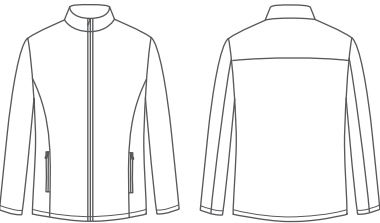
WIND & COLD PROOF



INSULATIVE

# PF07

Mens Bonded Polar Fleece Jacket



**FABRIC**  
350gsm – 100% Polyester Anti-Pill Bonded Polar Fleece

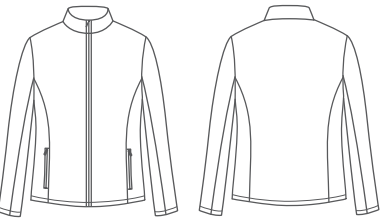
**STYLE**  
Zip Front Anti-Pill Polar Fleece Jacket with secure external zip pockets and internal pocket panels for extra convenience.

**SIZES**  
S – 5XL

**PAGE**  
28

# PF08

Ladies Bonded Polar Fleece Jacket



**FABRIC**  
350gsm – 100% Polyester Anti-Pill Bonded Polar Fleece

**STYLE**  
Zip Front Anti-Pill Polar Fleece Jacket with secure external zip pockets and internal pocket panels for extra convenience.

**SIZES**  
8 – 18

**PAGE**  
28



BLACK



NAVY



WIND & COLD PROOF



TOUGH WEARING

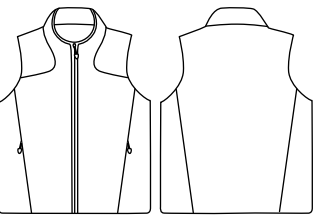


EASY CARE



PF09

Mens Bonded Polar Fleece Zip Front Vest



**FABRIC**  
350gsm – 100% Polyester Anti-Pill Bonded Polar Fleece

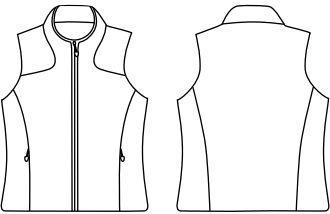
**STYLE**  
Zip Front Anti-Pill Polar Fleece Vest with secure external zip pockets and internal pocket panels for extra convenience.

**SIZES**  
S – 5XL

**PAGE**  
28

PF10

Ladies Bonded Polar Fleece Zip Front Vest

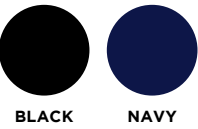


**FABRIC**  
350gsm – 100% Polyester Anti-Pill Bonded Polar Fleece

**STYLE**  
Zip Front Anti-Pill Polar Fleece Vest with secure external zip pockets and internal pocket panels for extra convenience.

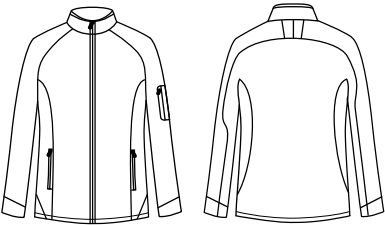
**SIZES**  
8 – 18

**PAGE**  
28



JK23

Mens Softshell Hi-Tech Jacket



**FABRIC**  
340gsm – Front Shell: 90% Polyester/10% Elastane woven – Bonded Back Shell : 100% Polyester Knit Inner Fabric: 100% Polyester Polar Fleece.

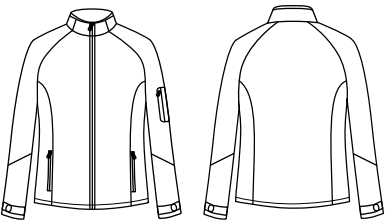
**STYLE**  
Fully lined zip front soft shell Jacket which is water and wind resistant, insulative and tough wearing whilst offering a comfortable 4 way stretch.

**SIZES**  
S – 5XL

**PAGE**  
30

JK24

Ladies Softshell Hi-Tech Jacket

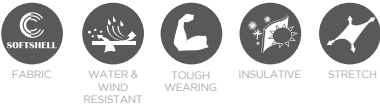


**FABRIC**  
340gsm – Front Shell: 90% Polyester/10% Elastane woven – Bonded Back Shell : 100% Polyester Knit Inner Fabric: 100% Polyester Polar Fleece.

**STYLE**  
Fully lined zip front soft shell Jacket which is water and wind resistant, insulative and tough wearing whilst offering a comfortable 4 way stretch.

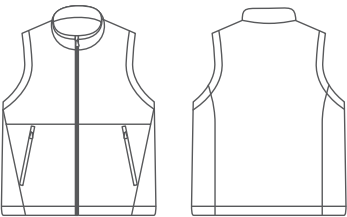
**SIZES**  
8 - 18

**PAGE**  
30



JK25

Mens Softshell Hi-Tech Vest



**FABRIC**  
340gsm – Bonded Softshell – shell face : 90% polyester/10% elastane shell back : 100% polyester

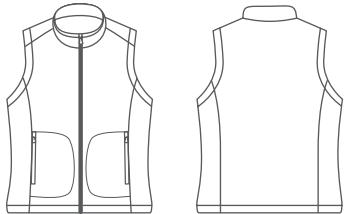
**STYLE**  
Fully lined zip front soft shell vest which is water and wind resistant, insulative and tough wearing whilst offering a comfortable 4 way stretch.

**SIZES**  
S – 5XL

**PAGE**  
30

JK26

Ladies Softshell Hi-Tech Vest

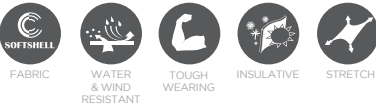


**FABRIC**  
340gsm – Bonded Softshell – shell face : 90% polyester/10% elastane shell back : 100% polyester

**STYLE**  
Fully lined zip front soft shell vest which is water and wind resistant, insulative and tough wearing whilst offering a comfortable 4 way stretch.

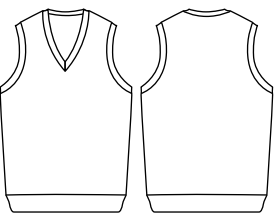
**SIZES**  
8 – 18

**PAGE**  
30



M9601

Ladies knitted v-neck vest



**FABRIC**  
12 gauge – 73% Viscose/27% Nylon

**STYLE**  
Modern fit, ribbed neck armhole and hem.

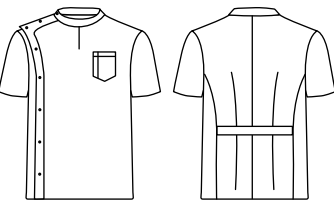
**SIZES**  
XS – 3XL (8 - 20)

**PAGE**  
30



# M7636

Mens Stud Front Short Sleeve Jacket



**FABRIC**  
100% Polyester Mechanical Stretch.

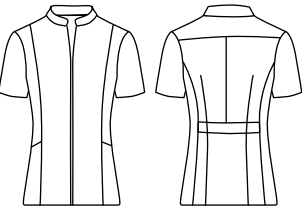
**STYLE**  
Stud buttons front, left chest pocket, round neck with stud button, back waist band with two pleats for better shape.

**SIZES**  
XS – 3XL

**PAGE**  
49

# M8636S

Ladies Full Zip Front Short Sleeve Tunic

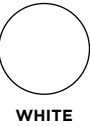


**FABRIC**  
100% Polyester Mechanical Stretch.

**STYLE**  
Full zip front, Two side pockets, Two side splits, back waist bank and one centre pleat for comfort.

**SIZES**  
6 – 24

**PAGE**  
49

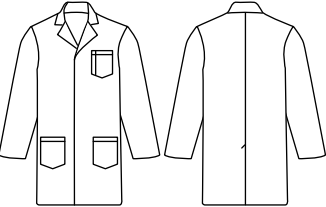


WHITE



# M7632

Unisex Long Sleeve Lab Coat

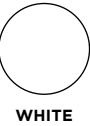


**FABRIC**  
190gsm - 65% Polyester, 35% Cotton, Anti-Static Twill.

**STYLE**  
Concealed stud buttons front, Two lower pockets, one chest pocket with pen partition, back centred vent.

**SIZES**  
XS – 2XL (8 - 20)

**PAGE**  
48



WHITE



- TECHNOLOGICALLY ADVANCED STRETCH FABRIC SCRUBS:**
- 160gsm TrueDry: 65% Polyester / 33% Cotton / 2% Elastane
  - Two way stretch
  - Permanent anti-microbial protection
  - TrueDry freshness effect
  - Easy care
  - Industrial laundry compliant





